

## VENTS VDO series



Axial smoke extraction fans with air capacity up to 108.000 m<sup>3</sup>/h and fire resistance rating:

- 200°C/2 hours;
- 300°C/2 hours;
- 400°C/2 hours.

### ■ Purpose

The fans are used for extraction of smoke in case of fire and removal of hot air outside. The fans are also used for general ventilation systems.

### ■ Operation

The fans are rated for permanent operation at ambient air temperatures from -60 °C up to +50 °C (depends on climatic category, see the Designation key). The fans are able to operate 2 hours at the temperatures +200 °C, +300 °C and +400 °C.

### ■ Design

The fan consists of the casing, impeller and motor. The metal casing with rolled flanges helps achieve outstanding rigidity and minimum clearances between the casing and the blades. There is an inspection hatch in the casing for easy maintenance. All the casing components are powder coated for improved protection against the environmental effects.

### ■ Motor

The fans are equipped with three-phase (400 V/50 Hz) motors. Depending on the model, the fans have single- or double-speed modifications.

- The single-speed models are equipped with 2-, 4- or 6-pole motors.
- The double-speed models are equipped with 2/4- or 4/8-pole motors.

### ■ Impeller

Depending on the size and the required air capacity the fans are equipped with impellers with 6 or 8 blades angled from 20° to 50° with from 2.5 up to 5° stepping to ensure precise matching of fans with the operating point. The specially designed impeller blades ensure high efficiency of the fan while keeping noise well under control. The impellers are dynamically balanced. Low weight and low moment of the impeller inertia help reduce the fan start-up time. The fan blades are made of cast aluminium.

### ■ Mounting

The fans can be mounted on any flat surface or directly into a ventilation duct. The units are suitable for both horizontal and vertical configurations. Installation in the air duct requires flanges to attach the fan to the ductwork. To attach the fan to the floor, a wall or the ceiling use the O-VO carriers (not included as standard, should be purchased separately). The fans are suitable for installation on rooftops.

### ■ Designation key

**VDO:** AXIAL SMOKE EXTRACTION FAN

**Standard size (dict diameter) [mm]**

**Modification:** **\_:** prolonged casing; **K:** shortened casing

**Number of the motor poles**

**Motor phase:** **E:** single-phase; **D:** three-phase

**Motor power [kW]**

**Number of the impeller blades [items]**

**Blade setting angle [°]**

**Blade material**

**AL:** aluminium

**Climatic category:**

**U:** moderate climate (-40...+40 °C)

**HL:** cold climate (-60...+40 °C)

**UHL:** moderate and cold climate (-60...+40 °C)

**T:** tropical climate (-10...+40 °C)

**M:** maritime moderately cold climate (-40...+40 °C)

**O:** general climatic modification (except maritime climate) (-60...+50 °C)

**OM:** general maritime climatic modification (-40...+40 °C)

**V:** universal climatic modification (-60...+50 °C)

**Placement category:**

**1:** outdoors

**2:** under a shed or indoors with the same conditions as outdoors except solar radiation and precipitation

**3:** in closed rooms without artificial climate control

**4:** in closed rooms with artificial climate control (ventilation, heating)

**5:** in rooms with high levels of humidity, without artificial climate control

**Fire resistance rating:**

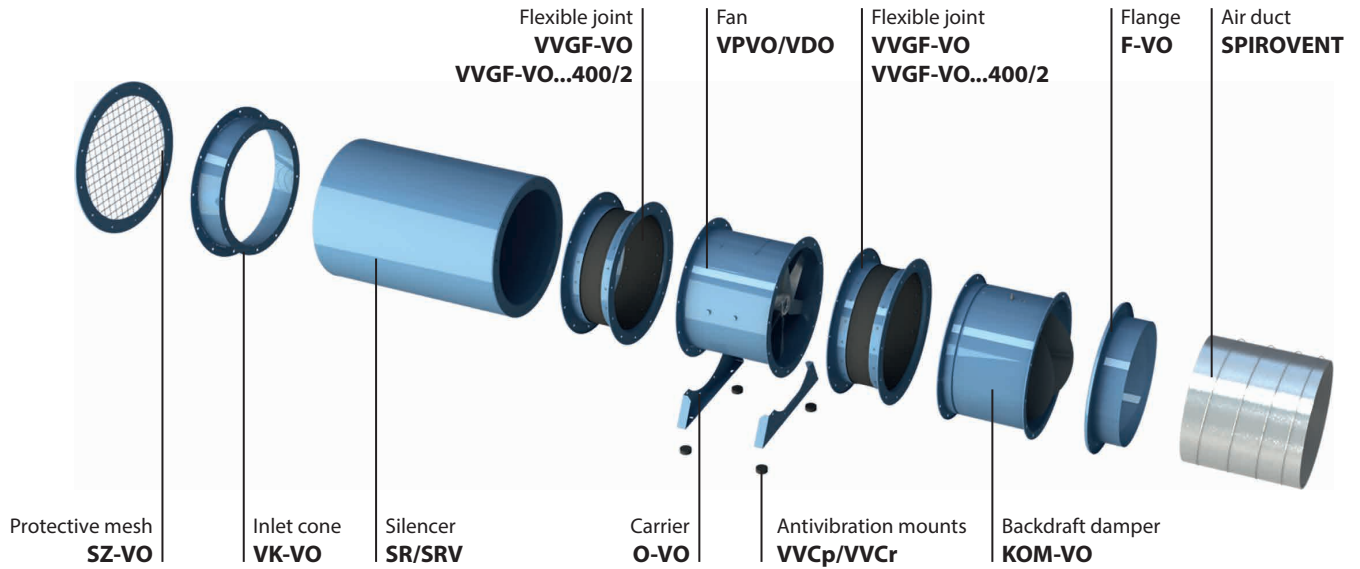
200/2 – 200 °C, 2 hours

300/2 – 300 °C, 2 hours

400/2 – 400 °C, 2 hours

Casing      Motor      Impeller      Modification  
**VDO-630K-2D/5.5-8/35/AL-U1-300/2**

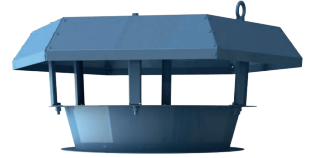
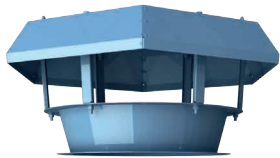
■ Complete solutions for axial fans



■ Installation example of axial fans on rooftop

Air pressurisation system

Smoke extraction system



Roof hood **Z-VO**



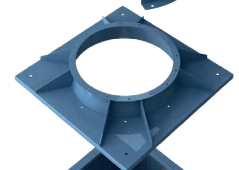
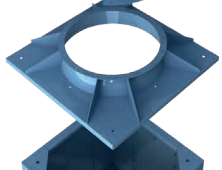
Backdraft damper **KOM1-VO**

Backdraft damper **KOM-VO**

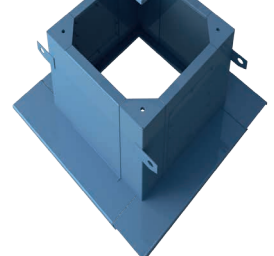
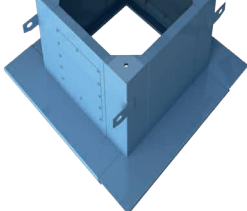


Axial fan **VPVO**

Axial smoke extraction fan **VDO**

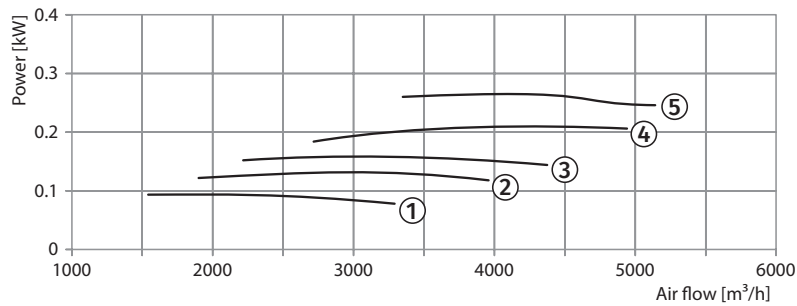
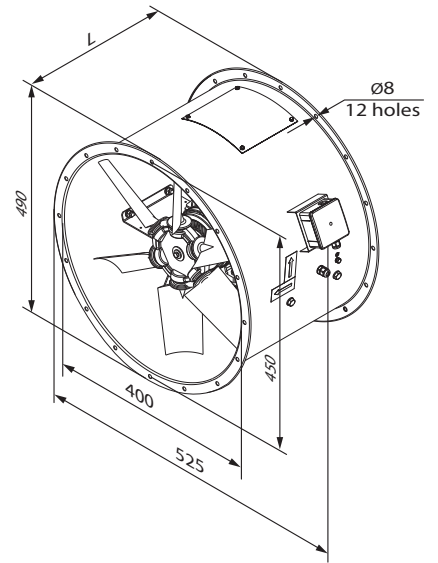
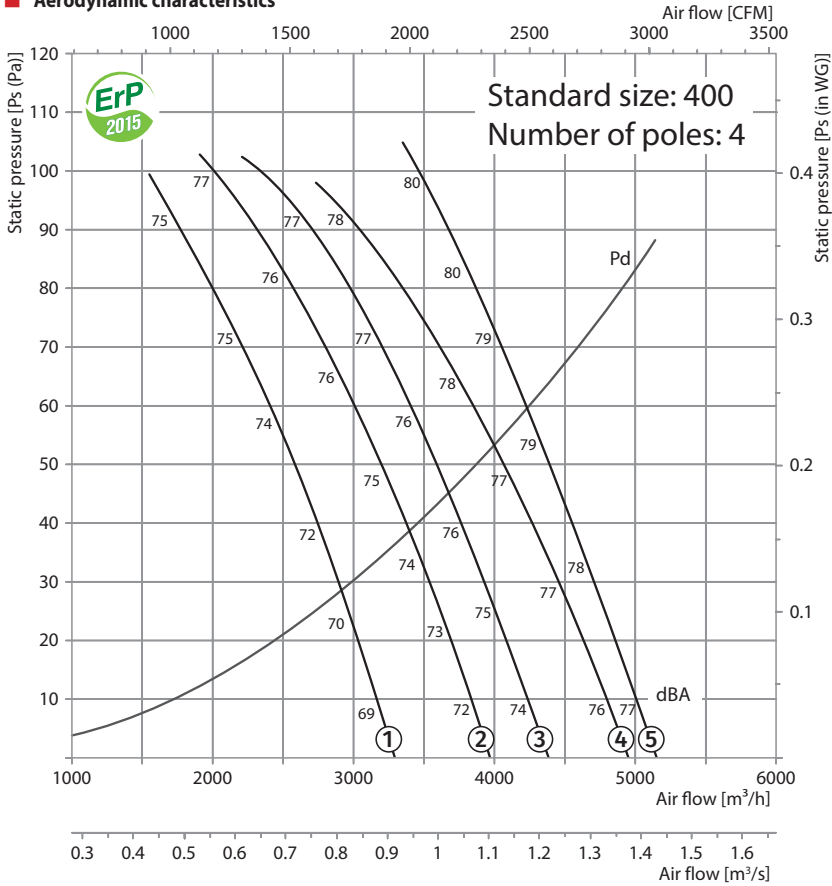


Roof adapter **PK-VO**



Mounting curb **SM-VO**

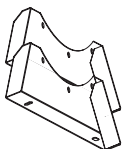
**Aerodynamic characteristics**



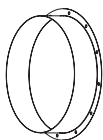
**Technical data:**

Size	Number of poles	Voltage [V / 50 Hz]	Model	Installed motor power Ny [kW]	RPM [min <sup>-1</sup> ]	Q-ty of blades	Blade setting angle [°]	Weight [kg]	Length L [mm]	Curve number on graph
400	4	3~ 400	VDO-400-4D/0,55-6/30/AL	0.55	1440	6	30	26.5	350	①
			VDO-400-4D/0,55-6/35/AL	0.55	1440	6	35	26.5	350	②
			VDO-400-4D/0,55-6/40/AL	0.55	1440	6	40	26.5	350	③
			VDO-400-4D/0,55-6/45/AL	0.55	1440	6	45	26.5	350	④
			VDO-400-4D/0,55-8/45/AL	0.55	1440	8	45	27	350	⑤

**Accessories:**



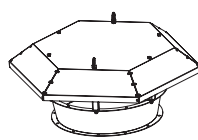
O-VO carrier



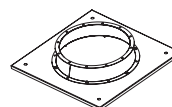
F-VO flange



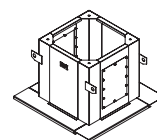
VVGf-VO flexible joint



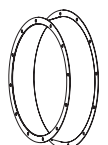
Z-VO hood



PK-VO roof adapter

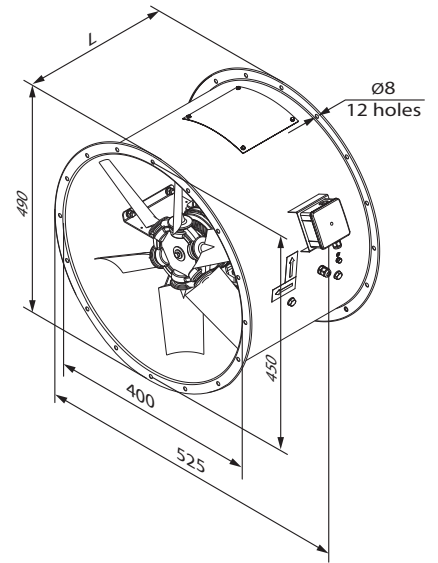
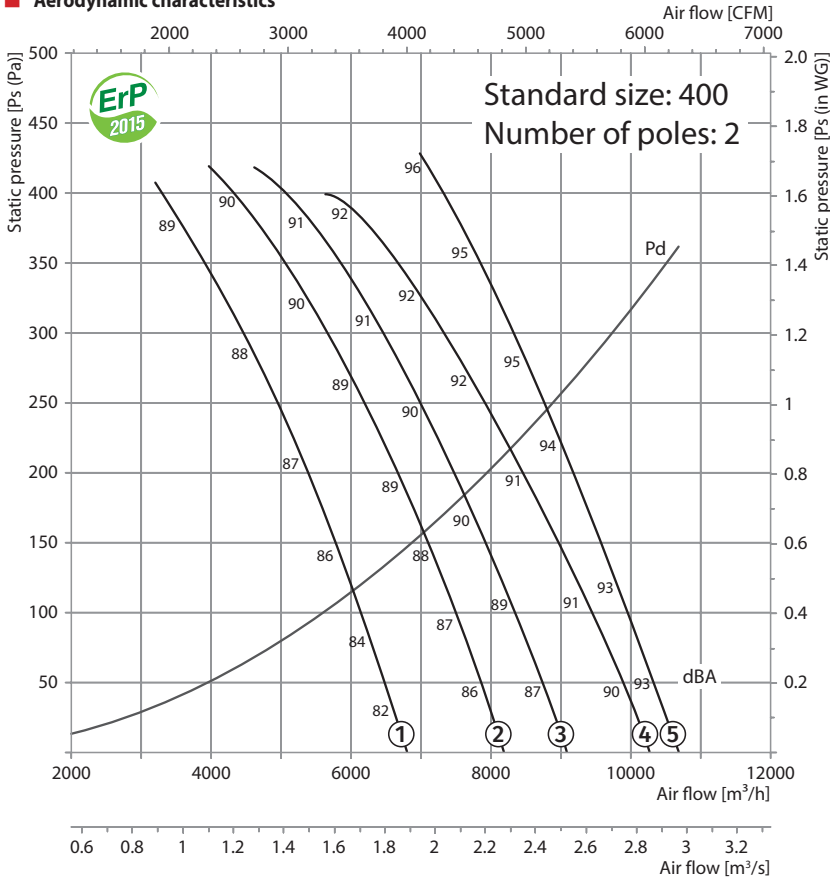


SM-VO mounting curb

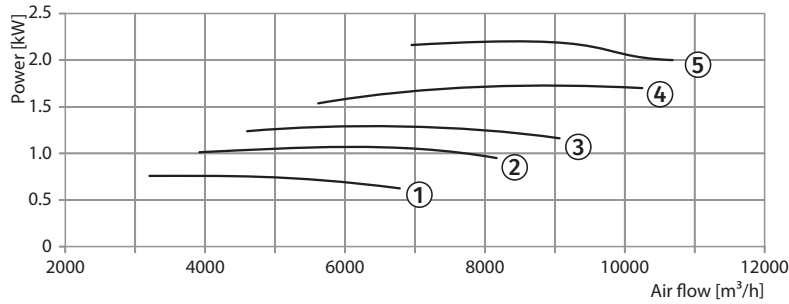


VK-VO inlet cone

**Aerodynamic characteristics**



VDO 400-2

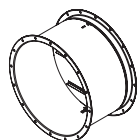


**Technical data:**

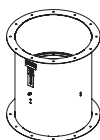
Size	Number of poles	Voltage [V / 50 Hz]	Model	Installed motor power Ny [kW]	RPM [min <sup>-1</sup> ]	Q-ty of blades	Blade setting angle [°]	Weight [kg]	Length L [mm]	Curve number on graph
400	2	3~ 400	VDO-400-2D/0,75-6/30/AL	0.75	2880	6	30	26.5	350	①
			VDO-400-2D/1,1-6/35/AL	1.1	2880	6	35	27.5	450	②
			VDO-400-2D/1,5-6/40/AL	1.5	2880	6	40	32.5	450	③
			VDO-400-2D/2,2-6/45/AL	2.2	2880	6	45	34.5	450	④
			VDO-400-2D/2,2-8/45/AL	2.2	2880	8	45	35	450	⑤
400	2/4	3~ 400	VDO-400-2/4D/0,8/0,2-6/30/AL	0.8/0.2	2880/1440	6	30	26.5	350	①*
			VDO-400-2/4D/1,1/0,25-6/35/AL	1.1/0.25	2880/1440	6	35	27.5	450	②*
			VDO-400-2/4D/1,5/0,37-6/40/AL	1.5/0.37	2880/1440	6	40	32.5	450	③*
			VDO-400-2/4D/2,2/0,5-6/45/AL	2.2/0.5	2880/1440	6	45	34.5	450	④*
			VDO-400-2/4D/2,2/0,5-8/45/AL	2.2/0.5	2880/1440	8	45	35	450	⑤*

\* maximum speed graph

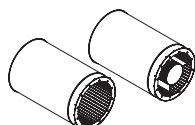
**Accessories:**



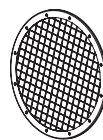
KOM-VO  
backdraft damper



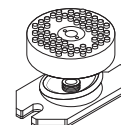
KOM1-VO  
backdraft damper



SR SRV  
silencer



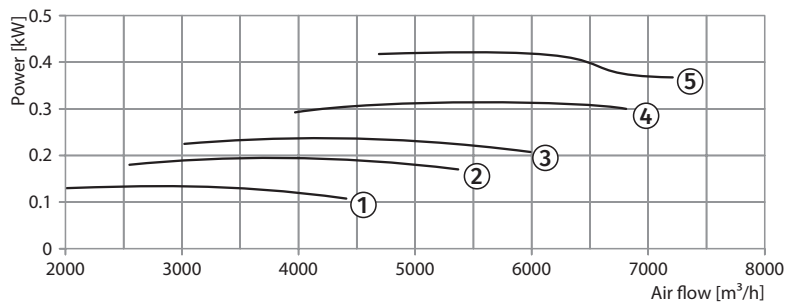
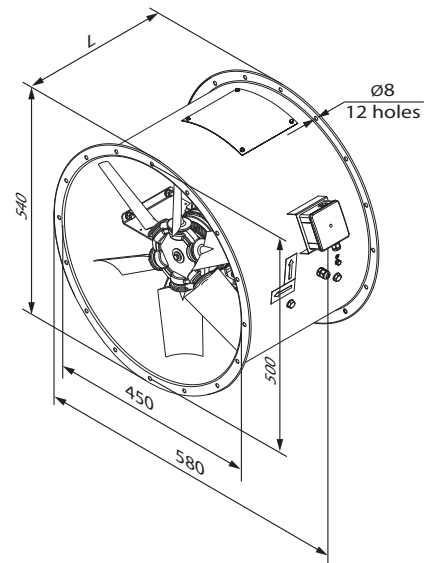
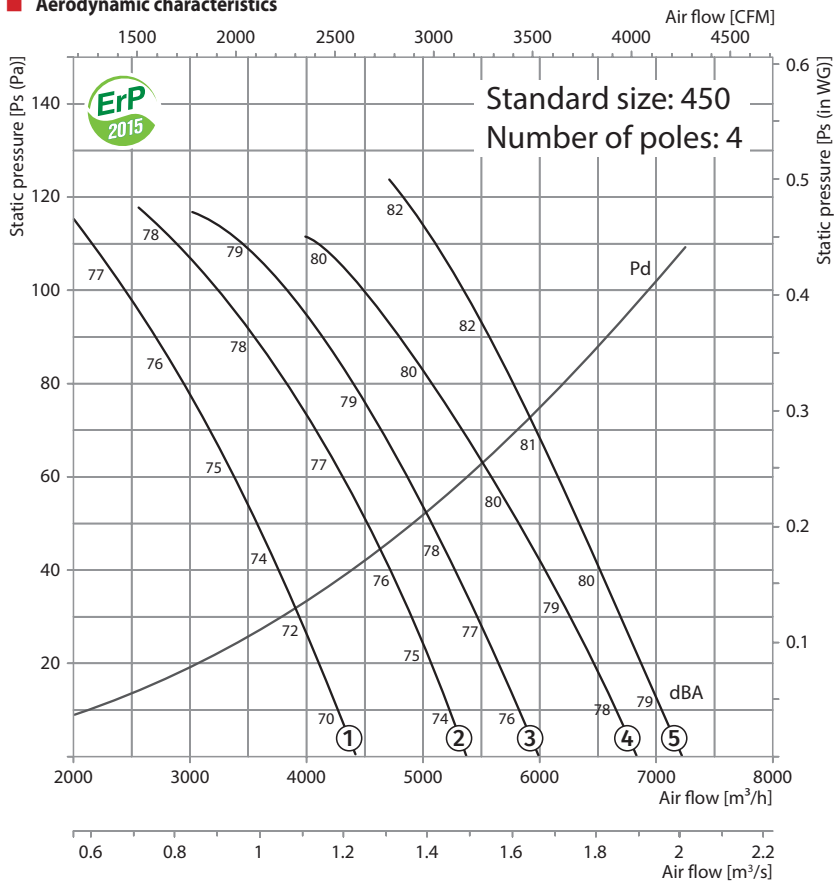
SZ-VO  
protective mesh



VVCp  
anti-vibration mount



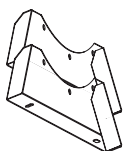
**Aerodynamic characteristics**



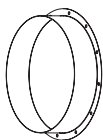
**Technical data:**

Size	Number of poles	Voltage [V / 50 Hz]	Model	Installed motor power Ny [kW]	RPM [min <sup>-1</sup> ]	Q-ty of blades	Blade setting angle [°]	Weight [kg]	Length L [mm]	Curve number on graph
450	4	3~ 400	VDO-450-4D/0,55-6/30/AL	0.55	1440	6	30	36.1	350	①
			VDO-450-4D/0,55-6/35/AL	0.55	1440	6	35	36.1	350	②
			VDO-450-4D/0,55-6/40/AL	0.55	1440	6	40	36.1	350	③
			VDO-450-4D/0,55-6/45/AL	0.55	1440	6	45	36.1	350	④
			VDO-450-4D/0,55-8/45/AL	0.55	1440	8	45	36.6	350	⑤

**Accessories:**



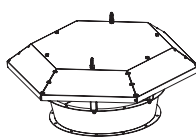
O-VO carrier



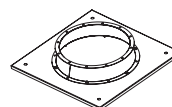
F-VO flange



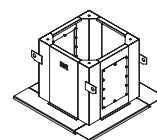
VVGf-VO flexible joint



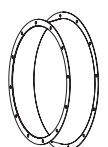
Z-VO hood



PK-VO roof adapter

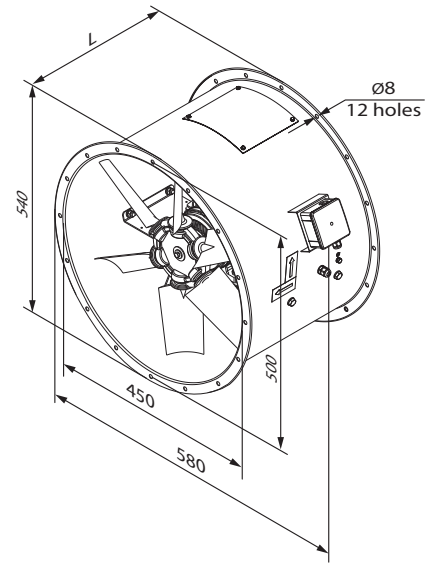
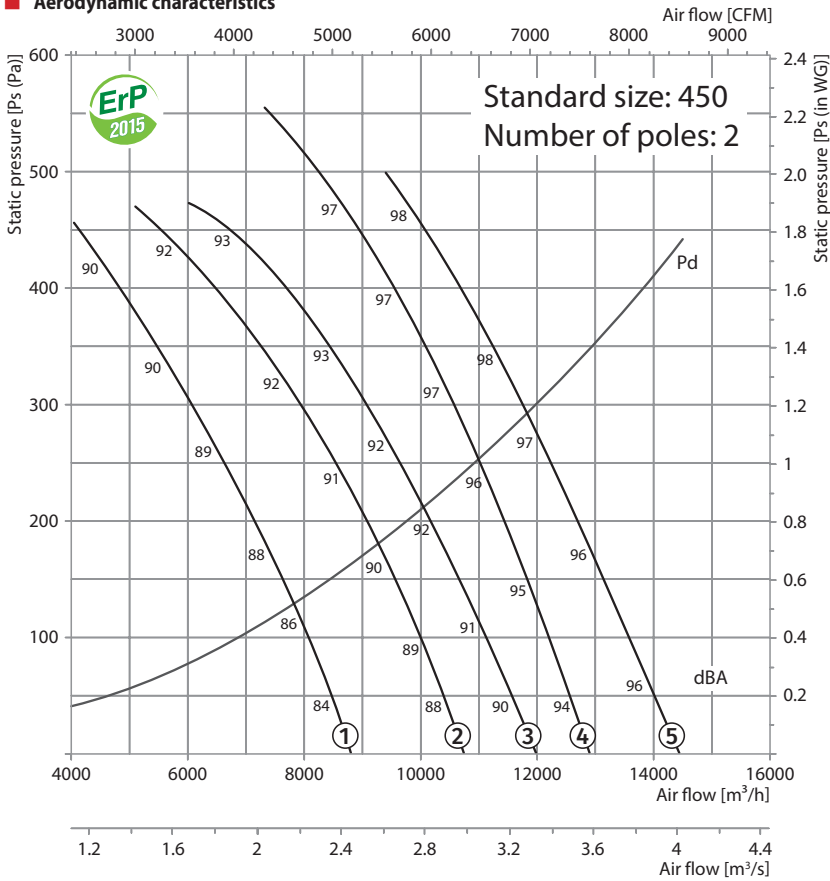


SM-VO mounting curb

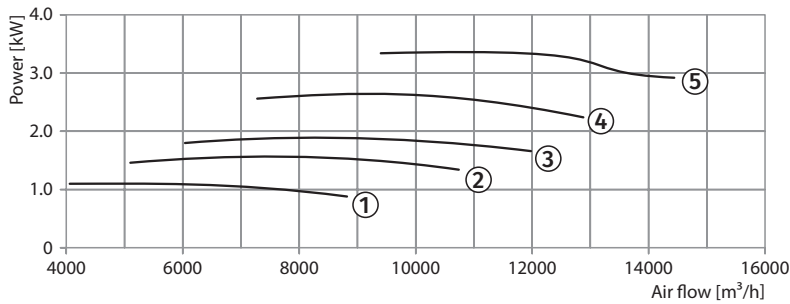


VK-VO inlet cone

**Aerodynamic characteristics**



VDO 450-2

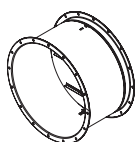


**Technical data:**

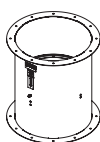
Size	Number of poles	Voltage [V / 50 Hz]	Model	Installed motor power Ny [kW]	RPM [min <sup>-1</sup> ]	Q-ty of blades	Blade setting angle [°]	Weight [kg]	Length L [mm]	Curve number on graph
450	2	3~400	VDO-450-2D/1,1-6/30/AL	1.1	2880	6	30	37.1	450	①
			VDO-450-2D/1,5-6/35/AL	1.5	2880	6	35	42.1	450	②
			VDO-450-2D/2,2-6/40/AL	2.2	2880	6	40	44.1	450	③
			VDO-450-2D/3-8/40/AL	3	2880	8	40	53.6	450	④
			VDO-450-2D/4-8/45/AL	4	2880	8	45	64.6	550	⑤
450	2/4	3~400	VDO-450-2/4D/1,1/0,25-6/30/AL	1.1/0.25	2880/1440	6	30	37.1	450	①*
			VDO-450-2/4D/1,5/0,37-6/35/AL	1.5/0.37	2880/1440	6	35	42.1	450	②*
			VDO-450-2/4D/2,2/0,5-6/40/AL	2.2/0.5	2880/1440	6	40	44.1	450	③*
			VDO-450-2/4D/3,1/0,8-8/40/AL	3.1/0.8	2880/1440	8	40	55.6	450	④*
			VDO-450-2/4D/4,4/1,1-8/45/AL	4.4/1.1	2880/1440	8	45	65.6	550	⑤*

\* maximum speed graph

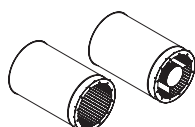
**Accessories:**



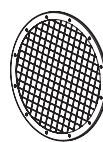
KOM-VO backdraft damper



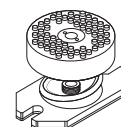
KOM1-VO backdraft damper



SR SRV silencer

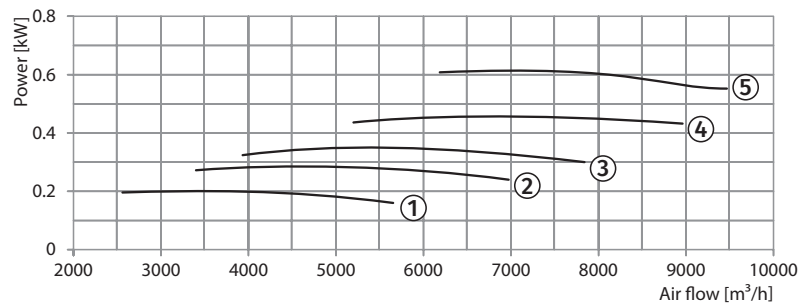
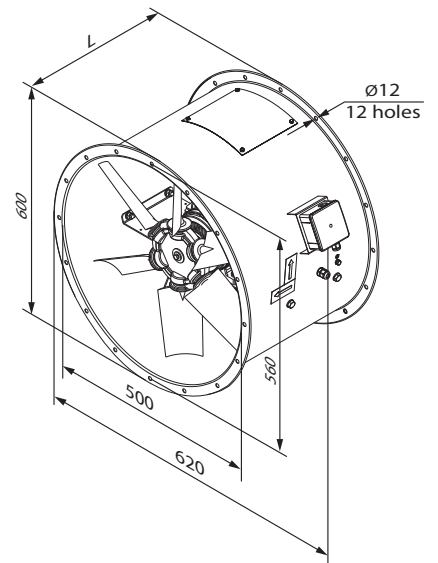
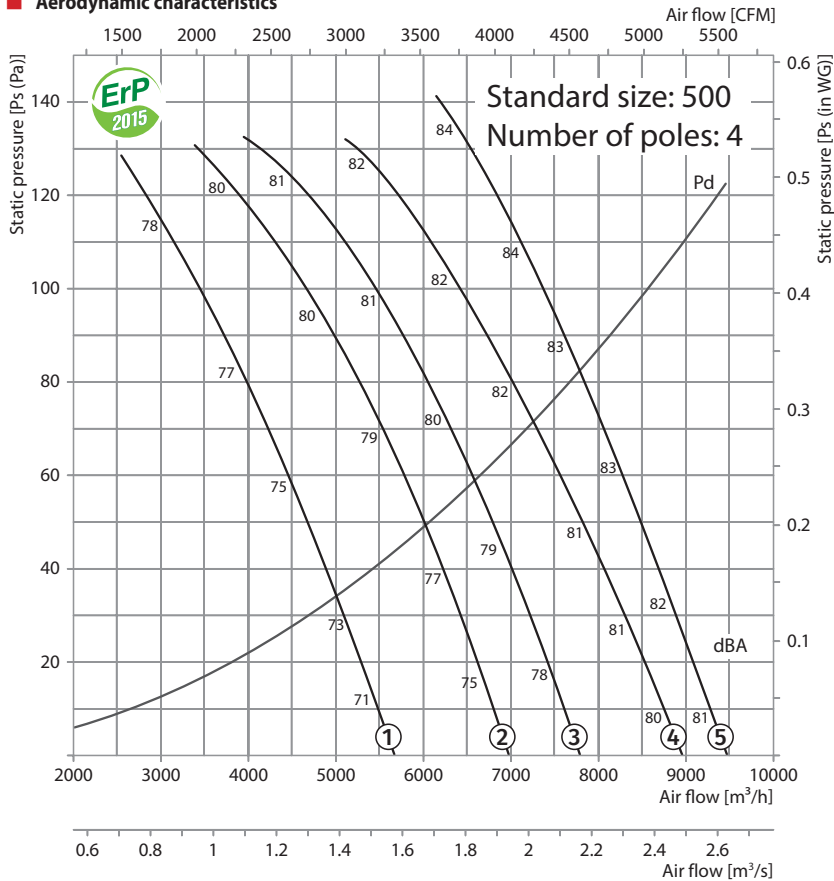


SZ-VO protective mesh



VVCp anti-vibration mount

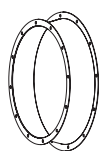
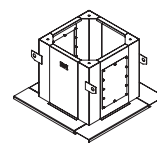
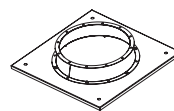
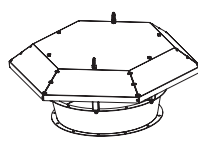
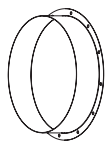
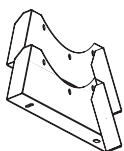
**Aerodynamic characteristics**



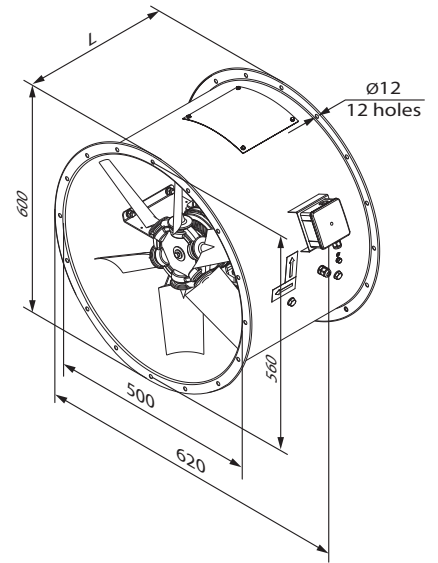
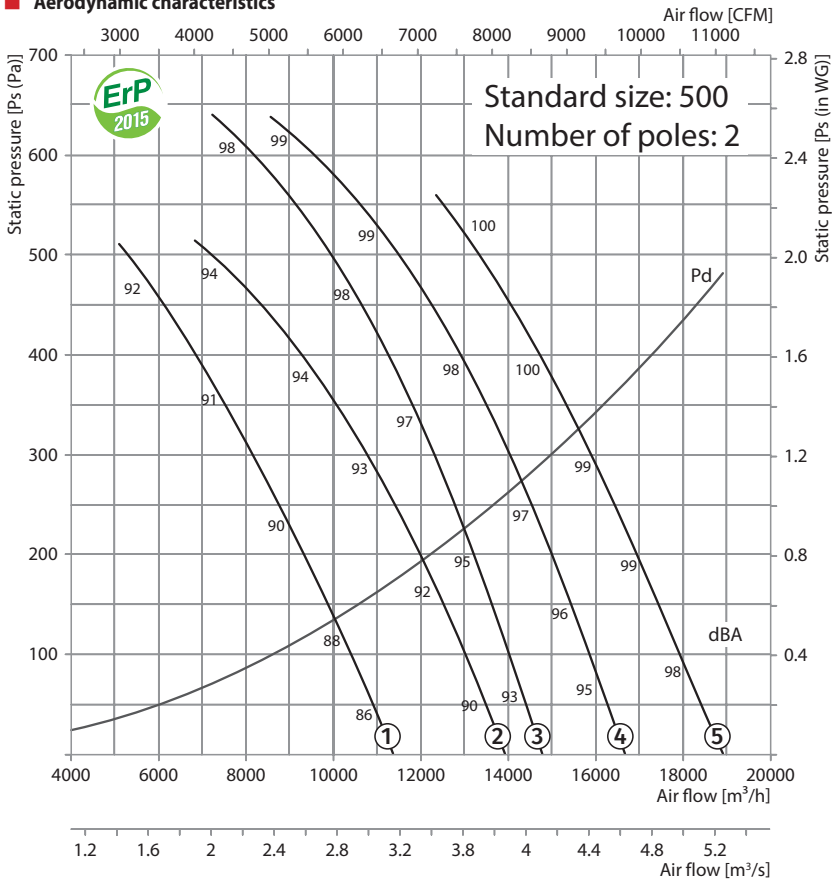
**Technical data:**

Size	Number of poles	Voltage [V / 50 Hz]	Model	Installed motor power Ny [kW]	RPM [min <sup>-1</sup> ]	Q-ty of blades	Blade setting angle [°]	Weight [kg]	Length L [mm]	Curve number on graph
500	4	3~ 400	VDO-500-4D/0,55-6/30/AL	0.55	1440	6	30	47.7	350	①
			VDO-500-4D/0,55-6/35/AL	0.55	1440	6	35	47.7	350	②
			VDO-500-4D/0,55-6/40/AL	0.55	1440	6	40	47.7	350	③
			VDO-500-4D/0,55-6/45/AL	0.55	1440	6	45	47.7	350	④
			VDO-500-4D/0,75-8/45/AL	0.75	1440	8	45	49.3	450	⑤

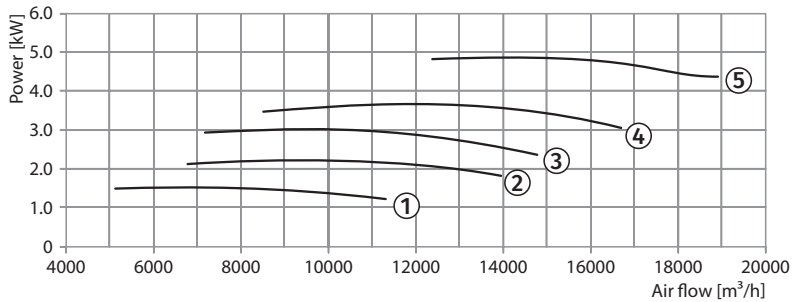
**Accessories:**



**Aerodynamic characteristics**



VDO 500-2

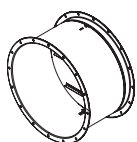


**Technical data:**

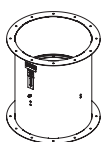
Size	Number of poles	Voltage [V / 50 Hz]	Model	Installed motor power Ny [kW]	RPM [min <sup>-1</sup> ]	Q-ty of blades	Blade setting angle [°]	Weight [kg]	Length L [mm]	Curve number on graph
500	2	3~400	VDO-500-2D/1,5-6/30/AL	1.5	2880	6	30	53.7	450	①
			VDO-500-2D/2,2-6/35/AL	2.2	2880	6	35	55.7	450	②
			VDO-500-2D/3-8/35/AL	3	2880	8	35	65.3	450	③
			VDO-500-2D/4-8/40/AL	4	2880	8	40	76.3	550	④
			VDO-500-2D/5,5-8/45/AL	5.5	2880	8	45	95.3	550	⑤
500	2/4	3~400	VDO-500-2/4D/1,5/0,37-6/30/AL	1.5/0.37	2880/1440	6	30	53.7	450	①*
			VDO-500-2/4D/2,2/0,5-6/35/AL	2.2/0.5	2880/1440	6	35	55.7	450	②*
			VDO-500-2/4D/3,1/0,8-8/35/AL	3.1/0.8	2880/1440	6	40	67.3	450	③*
			VDO-500-2/4D/4,4/1,1-8/40/AL	4.4/1.1	2880/1440	8	40	77.3	550	④*
			VDO-500-2/4D/6,0/1,5-8/45/AL	6/1.5	2880/1440	8	45	92.3	550	⑤*

\* maximum speed graph

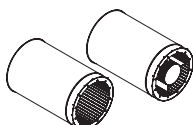
**Accessories:**



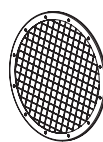
KOM-VO backdraft damper



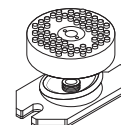
KOM1-VO backdraft damper



SR SRV silencer

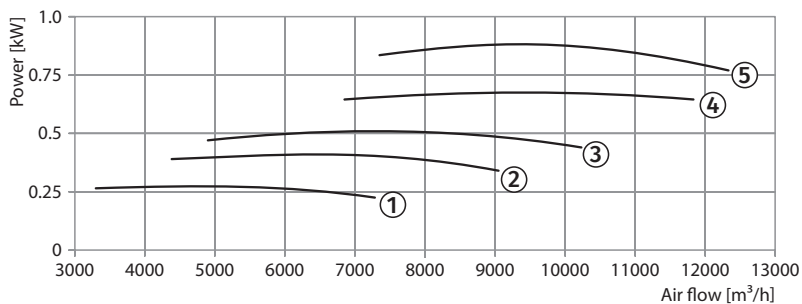
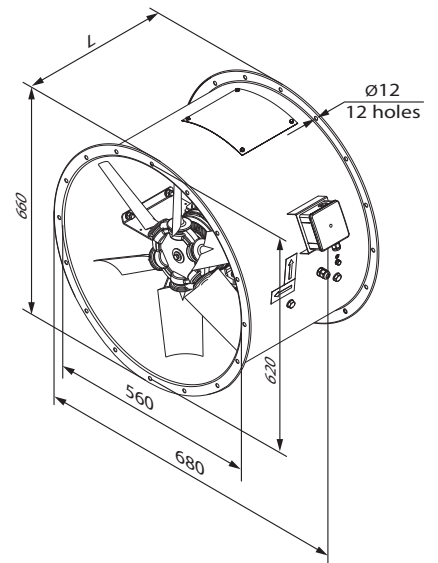
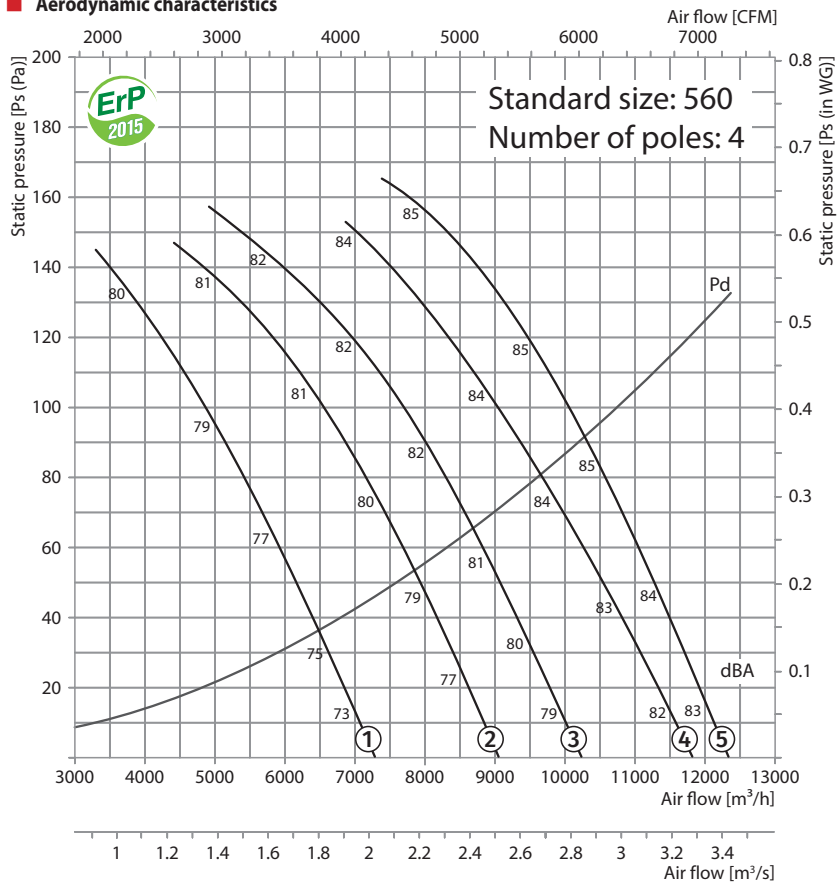


SZ-VO protective mesh



VVCp anti-vibration mount

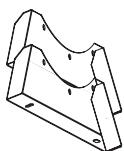
**Aerodynamic characteristics**



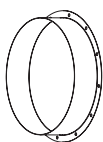
**Technical data:**

Size	Number of poles	Voltage [V / 50 Hz]	Model	Installed motor power Ny [kW]	RPM [min <sup>-1</sup> ]	Q-ty of blades	Blade setting angle [°]	Weight [kg]	Length L [mm]	Curve number on graph
560	4	3~ 400	VDO-560-4D/0,55-6/30/AL	0.55	1440	6	30	64.8	350	①
			VDO-560-4D/0,55-6/35/AL	0.55	1440	6	35	64.8	350	②
			VDO-560-4D/0,55-6/40/AL	0.55	1440	6	40	64.8	350	③
			VDO-560-4D/0,75-6/45/AL	0.75	1440	6	45	65.8	450	④
			VDO-560-4D/1,1-8/45/AL	1.1	1440	8	45	72.4	450	⑤

**Accessories:**



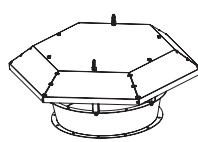
O-VO carrier



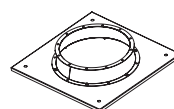
F-VO flange



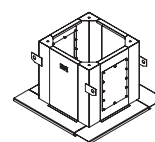
VVGF-VO flexible joint



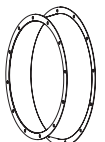
Z-VO hood



PK-VO roof adapter

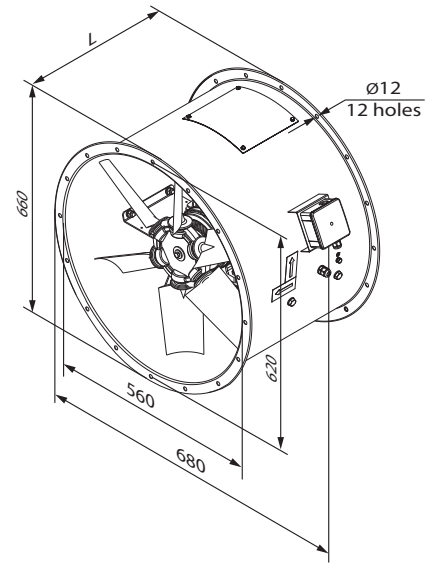
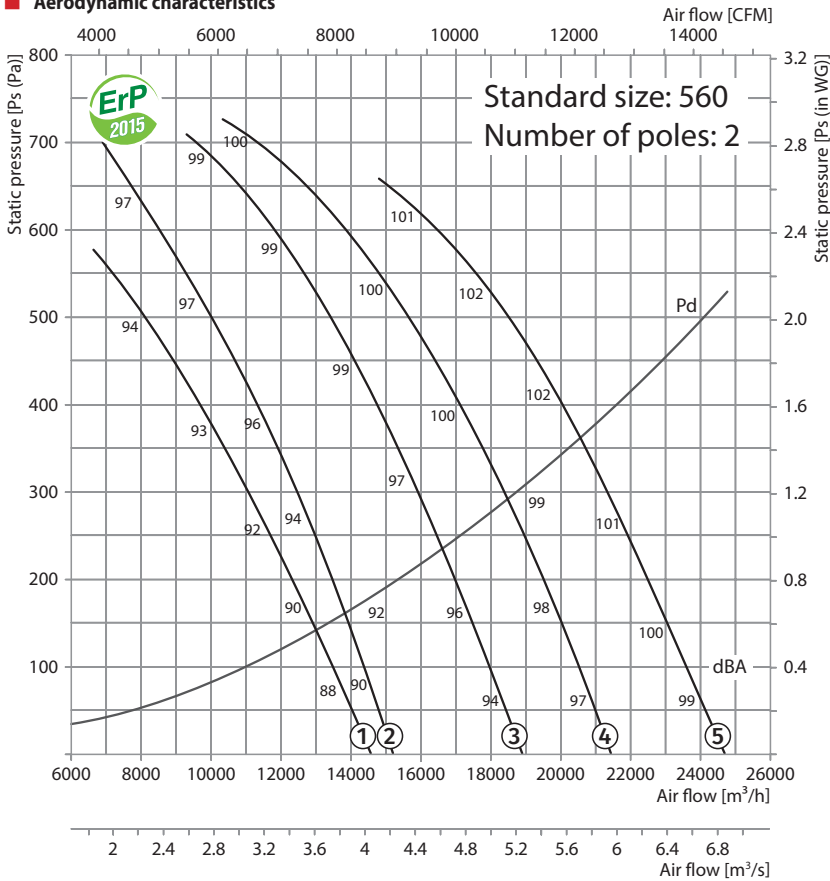


SM-VO mounting curb

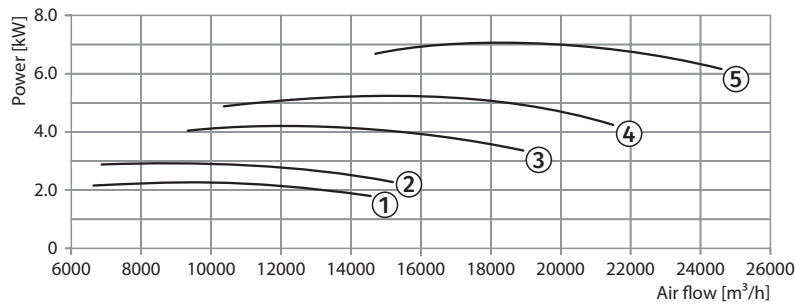


VK-VO inlet cone

**Aerodynamic characteristics**



VDO 560-2

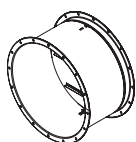


**Technical data:**

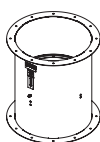
Size	Number of poles	Voltage [V / 50 Hz]	Model	Installed motor power Ny [kW]	RPM [min <sup>-1</sup> ]	Q-ty of blades	Blade setting angle [°]	Weight [kg]	Length L [mm]	Curve number on graph
560	2	3~400	VDO-560-2D/2,2-6/30/AL	2.2	2880	6	30	72.8	450	①
			VDO-560-2D/3-8/30/AL	3	2880	8	30	82.4	450	②
			VDO-560-2D/4-8/35/AL	4	2880	8	35	93.4	550	③
			VDO-560-2D/5,5-8/40/AL	5.5	2880	8	40	112.4	550	④
			VDO-560-2D/7,5-8/45/AL	7.5	2880	8	45	118.4	550	⑤
560	2/4	3~400	VDO-560-2/4D/2,2/0,5-6/30/AL	2.2/0.5	2880/1440	6	30	72.8	450	①*
			VDO-560-2/4D/3,1/0,8-8/30/AL	3.1/0.8	2880/1440	8	30	84.4	450	②*
			VDO-560-2/4D/4,4/1,1-8/35/AL	4.4/1.1	2880/1440	8	35	94.4	550	③*
			VDO-560-2/4D/6/1,5-8/40/AL	6/1.5	2880/1440	8	40	109.4	550	④*
			VDO-560-2/4D/8/2-8/45/AL	8/2	2880/1440	8	45	118.4	550	⑤*

\* maximum speed graph

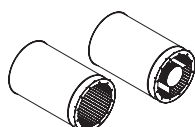
**Accessories:**



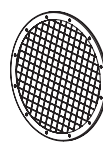
KOM-VO backdraft damper



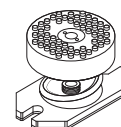
KOM1-VO backdraft damper



SR SRV silencer



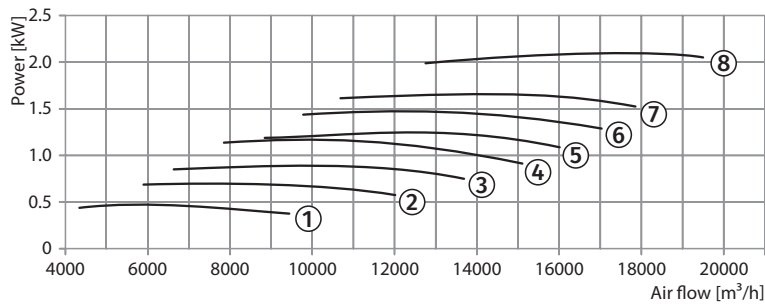
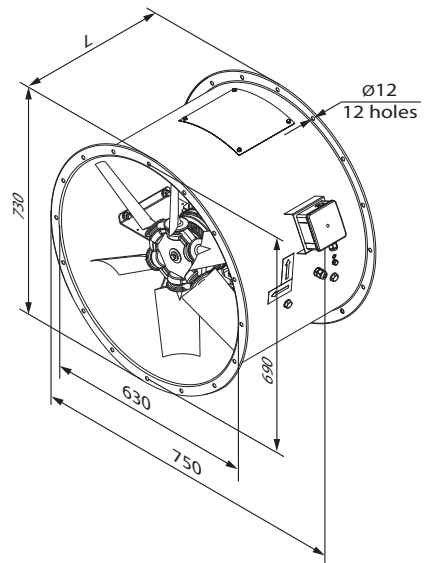
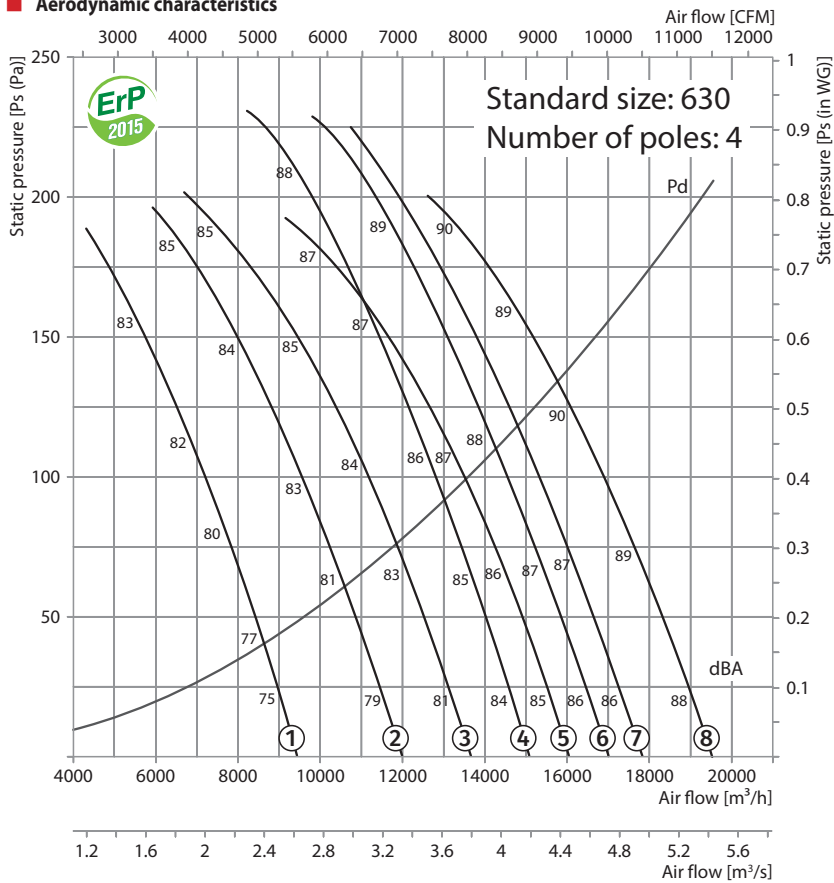
SZ-VO protective mesh



VVCp anti-vibration mount



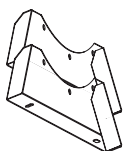
**Aerodynamic characteristics**



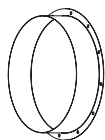
**Technical data:**

Size	Number of poles	Voltage [V / 50 Hz]	Model	Installed motor power Ny [kW]	RPM [min <sup>-1</sup> ]	Q-ty of blades	Blade setting angle [°]	Weight [kg]	Length L [mm]	Curve number on graph
630	4	3~ 400	VDO-630-4D/0,55-8/30/AL	0.55	1440	8	30	71	350	①
			VDO-630-4D/0,75-8/35/AL	0.75	1440	8	35	72	450	②
			VDO-630-4D/1,1-8/40/AL	1.1	1440	8	40	78	450	③
			VDO-630-4D/1,5-6/32,5/AL	1.5	1440	6	32.5	82.1	450	④
			VDO-630-4D/1,5-8/45/AL	1.5	1440	8	45	81	450	⑤
			VDO-630-4D/1,5-6/37,5/AL	1.5	1440	6	37.5	82.1	450	⑥
			VDO-630-4D/2,2-6/40/AL	2.2	1440	6	40	88.1	450	⑦
			VDO-630-4D/2,2-6/45/AL	2.2	1440	6	45	88.1	450	⑧

**Accessories:**



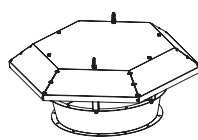
O-VO carrier



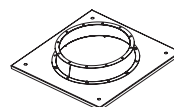
F-VO flange



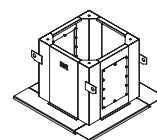
VVGf-VO flexible joint



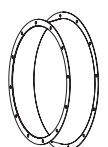
Z-VO hood



PK-VO roof adapter

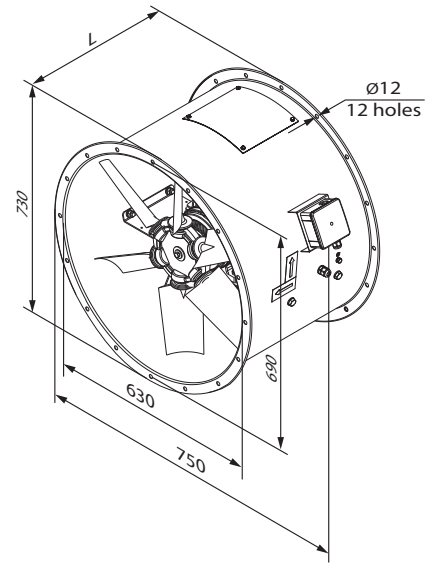
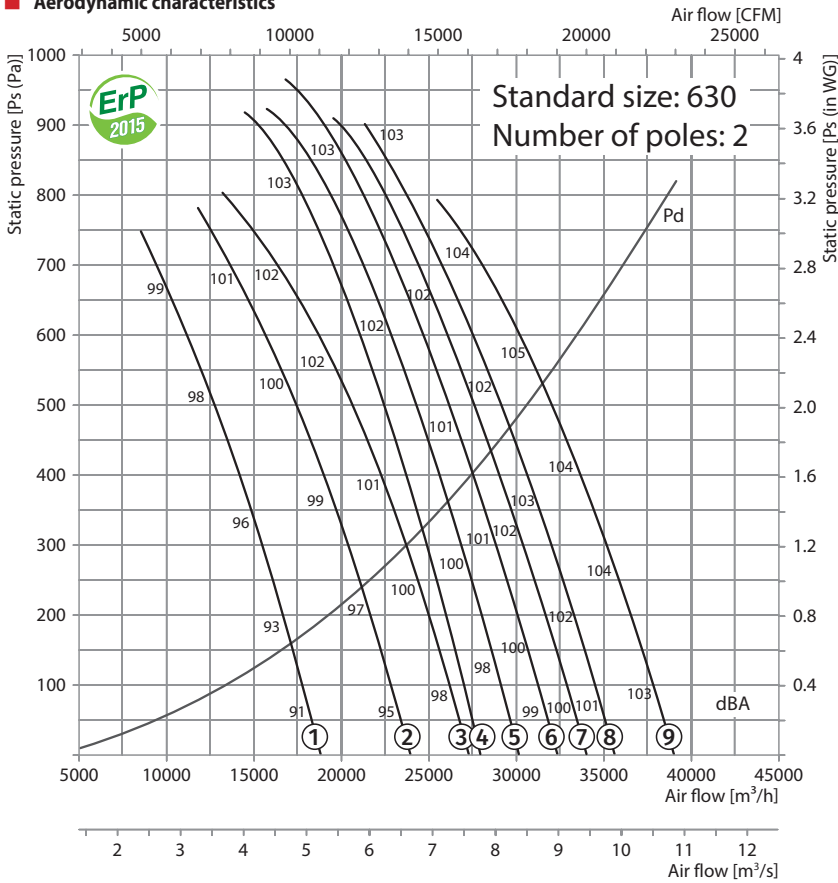


SM-VO mounting curb

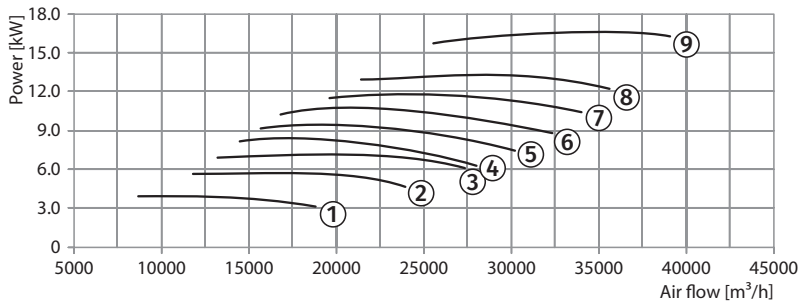


VK-VO inlet cone

**Aerodynamic characteristics**



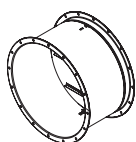
VDO 630-2



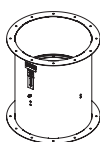
**Technical data:**

Size	Number of poles	Voltage [V / 50 Hz]	Model	Installed motor power Ny [kW]	RPM [min <sup>-1</sup> ]	Q-ty of blades	Blade setting angle [°]	Weight [kg]	Lenght L [mm]	Curve number on graph
630	2	3~400	VDO-630-2D/4-8/30/AL	4	2880	8	30	99	550	①
			VDO-630-2D/5,5-8/35/AL	5.5	2880	8	35	118	550	②
			VDO-630-2D/7,5-8/40/AL	7.5	2880	8	40	124	550	③
			VDO-630-2D/9,2-6/30/AL	9.2	2880	6	30	143.1	650	④
			VDO-630-2D/11-6/32,5/AL	11	2880	6	32.5	162.1	650	⑤
			VDO-630-2D/11-6/35/AL	11	2880	6	35	162.1	650	⑥
			VDO-630-2D/15-6/37,5/AL	15	2880	6	37.5	169.1	750	⑦
			VDO-630-2D/15-6/40/AL	15	2880	6	40	169.1	750	⑧
			VDO-630-2D/18,5-6/45/AL	18.5	2880	6	45	184.1	750	⑨

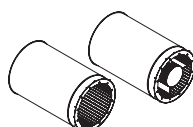
**Accessories:**



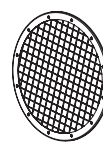
KOM-VO backdraft damper



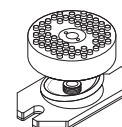
KOM1-VO backdraft damper



SR SRV silencer

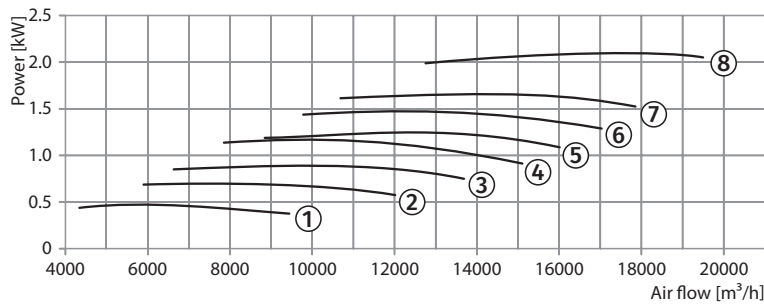
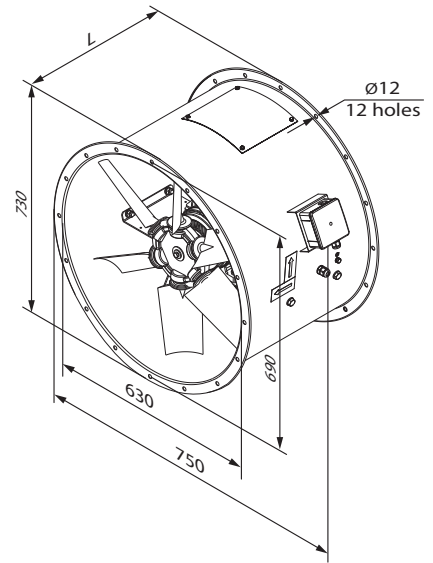
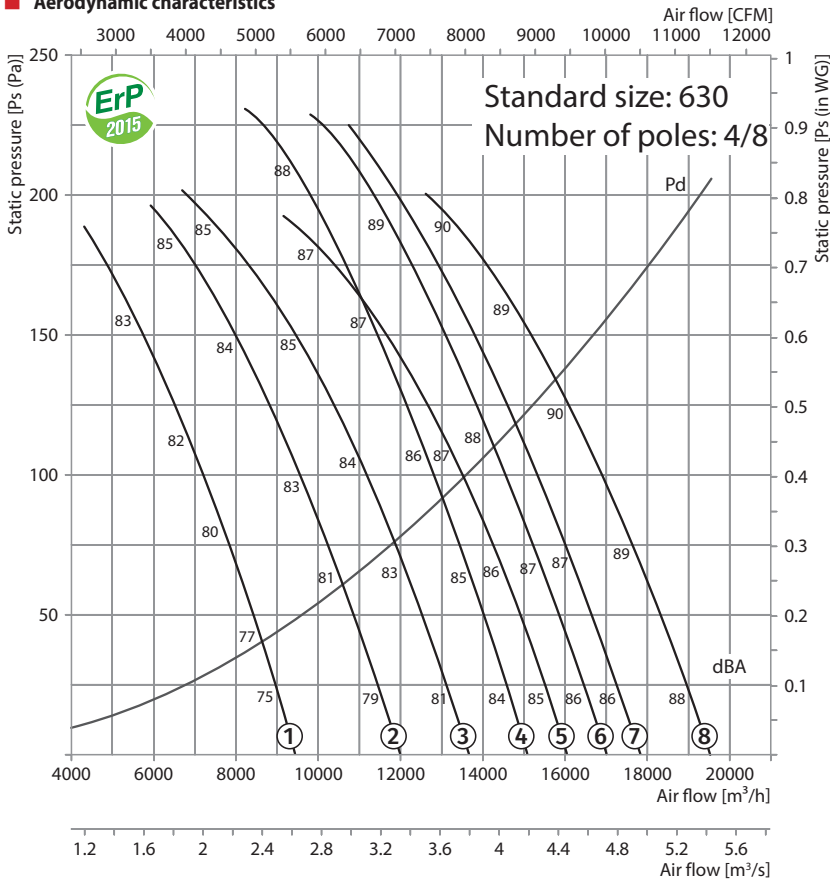


SZ-VO protective mesh



VVCp anti-vibration mount

**Aerodynamic characteristics**

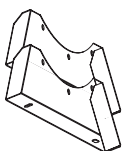


**Technical data:**

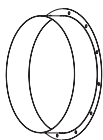
Size	Number of poles	Voltage [V / 50 Hz]	Model	Installed motor power Ny [kW]	RPM [min <sup>-1</sup> ]	Q-ty of blades	Blade setting angle [°]	Weight [kg]	Length L [mm]	Curve number on graph
630	4/8	3~ 400	VDO-630-4/8D/0,6/0,15-8/30/AL	0.6/0.15	1440/720	8	30	72	350	①*
			VDO-630-4/8D/0,8/0,2-8/35/AL	0.8/0.2	1440/720	8	35	72	450	②*
			VDO-630-4/8D/1,2/0,3-8/40/AL	1.2/0.3	1440/720	8	40	77	450	③*
			VDO-630-4/8D/1,2/0,3-6/32,5/AL	1.2/0.3	1440/720	6	32.5	78.1	450	④*
			VDO-630-4/8D/1,6/0,4-8/45/AL	1.6/0.4	1440/720	8	45	80	450	⑤*
			VDO-630-4/8D/1,6/0,4-6/37,5/AL	1.6/0.4	1440/720	6	37.5	81.1	450	⑥*
			VDO-630-4/8D/2,2/0,55-6/40/AL	2.2/0.55	1440/720	6	40	88.1	450	⑦*
			VDO-630-4/8D/2,2/0,55-6/45/AL	2.2/0.55	1440/720	6	45	88.1	450	⑧*

\* maximum speed graph

**Accessories:**



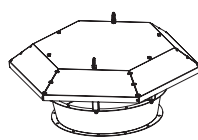
O-VO carrier



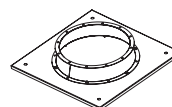
F-VO flange



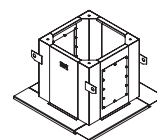
VVGf-VO flexible joint



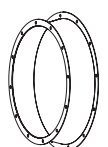
Z-VO hood



PK-VO roof adapter

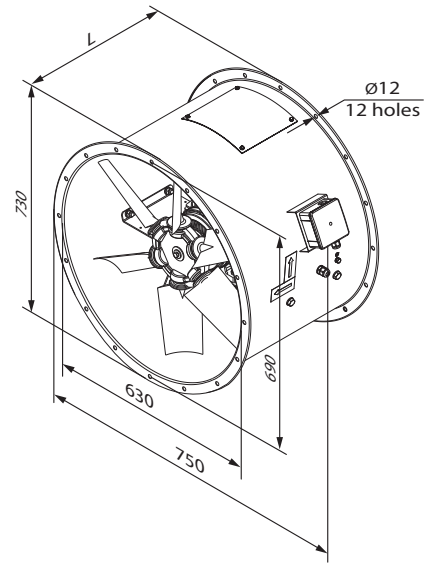
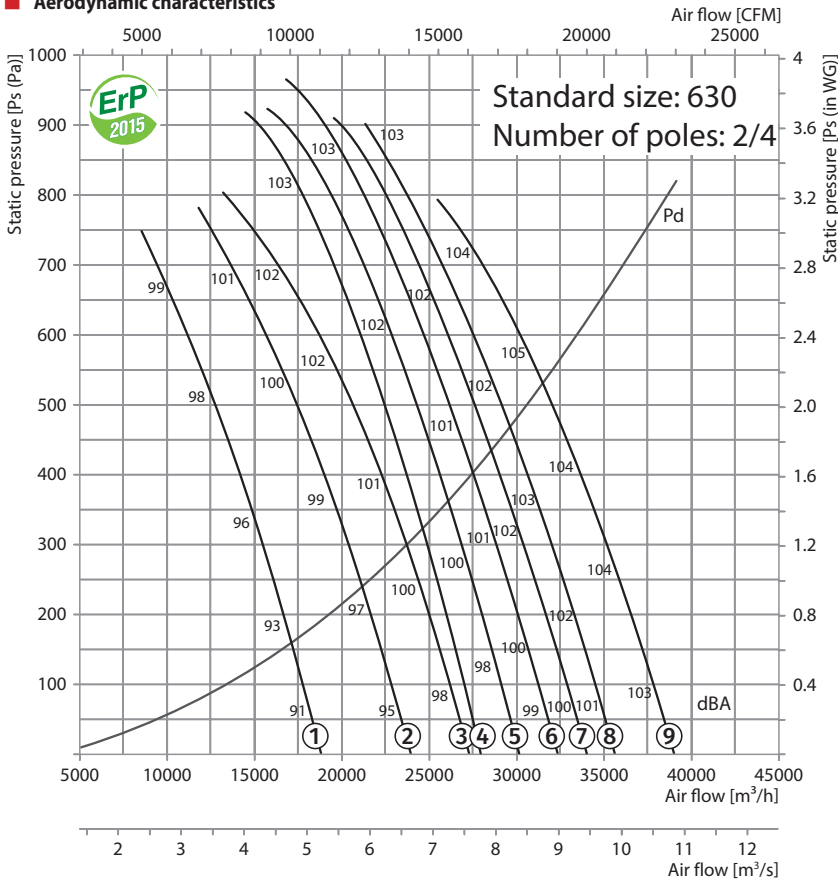


SM-VO mounting curb

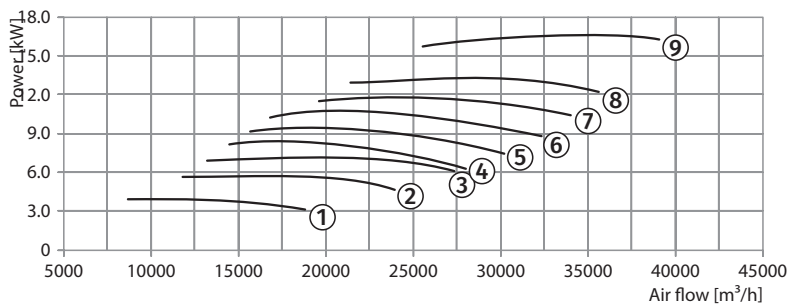


VK-VO inlet cone

**Aerodynamic characteristics**



**VDO 630-2/4**

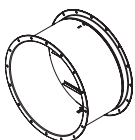


**Technical data:**

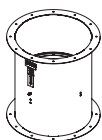
Size	Number of poles	Voltage [V / 50 Hz]	Model	Installed motor power Ny [kW]	RPM [min <sup>-1</sup> ]	Q-ty of blades	Blade setting angle [°]	Weight [kg]	Length L [mm]	Curve number on graph
630	2/4	3~400	VDO-630-2/4D/4,4/1,1-8/30/AL	4.4/1.1	2880/1440	8	30	100	550	①*
			VDO-630-2/4D/6/1,5-8/35/AL	6/1.5	2880/1440	8	35	115	550	②*
			VDO-630-2/4D/8/2-8/40/AL	8/2	2880/1440	8	40	124	550	③*
			VDO-630-2/4D/12/3-6/30/AL	12/3	2880/1440	6	30	176.1	650	④*
			VDO-630-2/4D/12/3-6/32,5/AL	12/3	2880/1440	6	32.5	176.1	650	⑤*
			VDO-630-2/4D/12/3-6/35/AL	12/3	2880/1440	6	35	176.1	650	⑥*
			VDO-630-2/4D/12/3-6/37,5/AL	12/3	2880/1440	6	37.5	176.1	750	⑦*
			VDO-630-2/4D/16/4-6/40/AL	16/4	2880/1440	6	40	193.1	750	⑧*
			VDO-630-2/4D/20/5,5-6/45/AL	20/5.5	2880/1440	6	45	218.1	750	⑨*

\* maximum speed graph

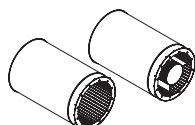
**Accessories:**



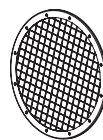
KOM-VO  
backdraft damper



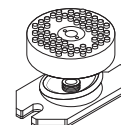
KOM1-VO  
backdraft damper



SR SRV  
silencer



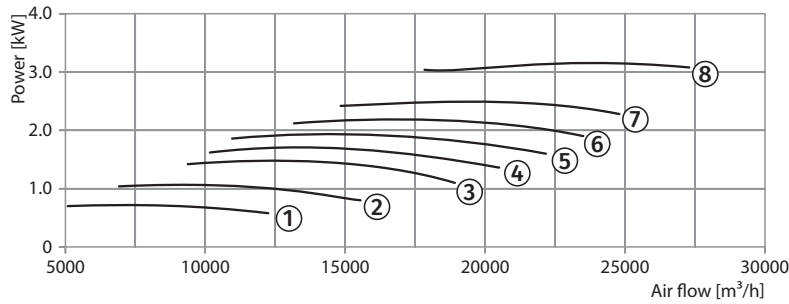
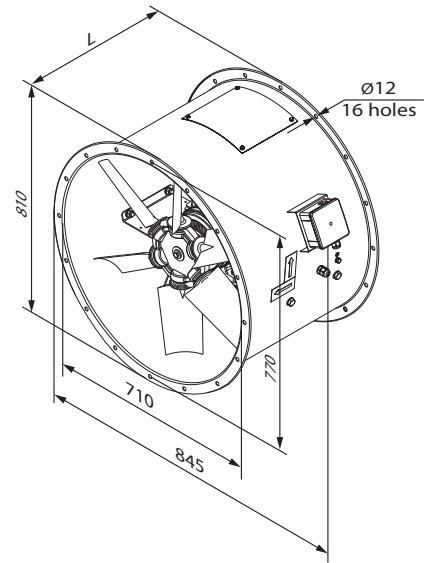
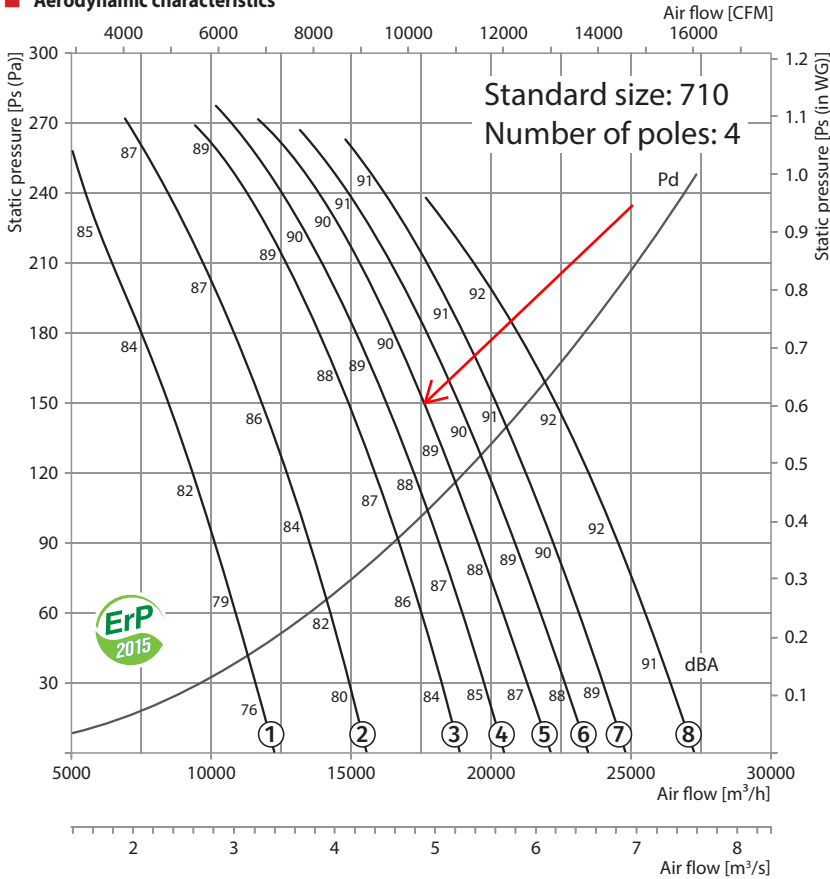
SZ-VO  
protective mesh



VVCp  
anti-vibration mount

**VDO 710-4**

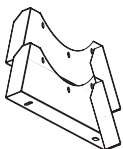
**Aerodynamic characteristics**



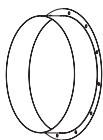
**Technical data:**

Size	Number of poles	Voltage [V / 50 Hz]	Model	Installed motor power Ny [kW]	RPM [min <sup>-1</sup> ]	Q-ty of blades	Blade setting angle [°]	Weight [kg]	Length L [mm]	Curve number on graph
710	4	3~ 400	VDO-710-4D/0,75-6/20/AL	0.75	1440	6	20	99.3	450	①
			VDO-710-4D/1,1-6/25/AL	1.1	1440	6	25	105.3	450	②
			VDO-710-4D/1,5-6/30/AL	1.5	1440	6	30	108.3	450	③
			VDO-710-4D/2,2-6/32,5/AL	2.2	1440	6	32.5	114.3	450	④
			VDO-710-4D/2,2-6/35/AL	2.2	1440	6	35	114.3	450	⑤
			VDO-710-4D/2,2-6/37,5/AL	2.2	1440	6	37.5	114.3	450	⑥
			VDO-710-4D/3-6/40/AL	3	1440	6	40	117.3	550	⑦
			VDO-710-4D/4-6/45/AL	4	1440	6	45	131.3	550	⑧

**Accessories:**



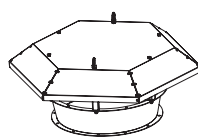
O-VO carrier



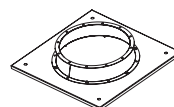
F-VO flange



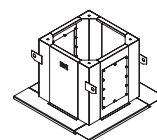
VVGf-VO flexible joint



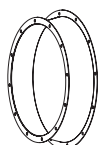
Z-VO hood



PK-VO roof adapter

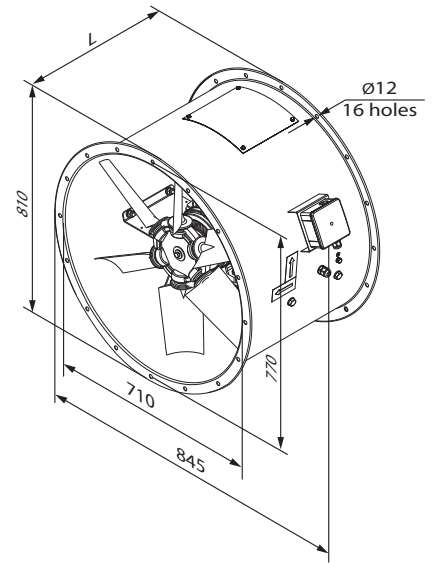
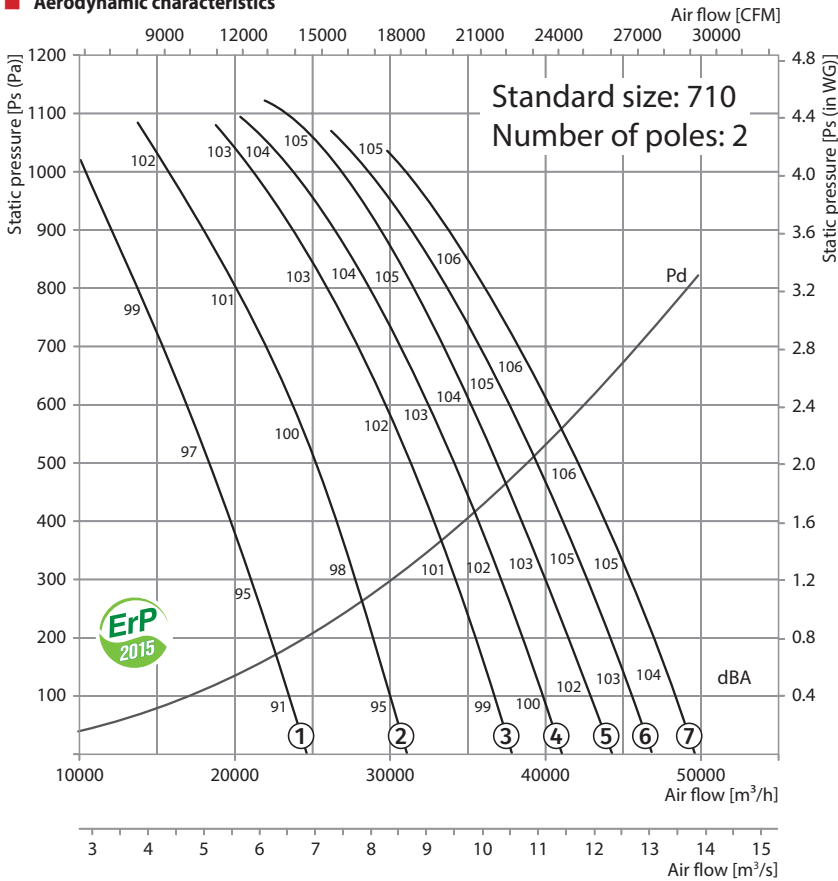


SM-VO mounting curb

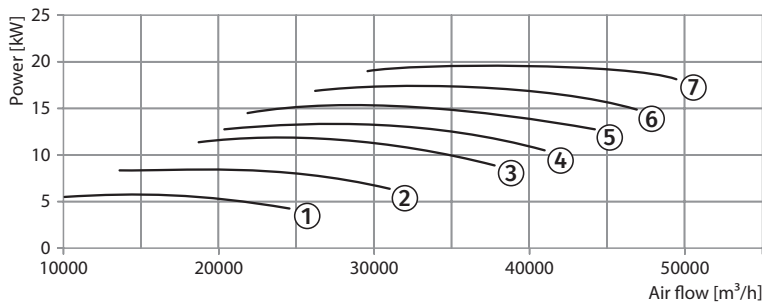


VK-VO inlet cone

**Aerodynamic characteristics**



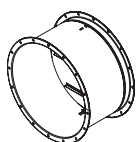
VDO 710-2



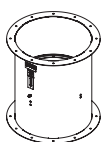
**Technical data:**

Size	Number of poles	Voltage [V / 50 Hz]	Model	Installed motor power Ny [kW]	RPM [min <sup>-1</sup> ]	Q-ty of blades	Blade setting angle [°]	Weight [kg]	Length L [mm]	Curve number on graph
710	2	3~400	VDO-710-2D/7,5-6/20/AL	7.5	2880	6	20	151.3	550	①
			VDO-710-2D/9,2-6/25/AL	9.2	2880	6	25	169.3	650	②
			VDO-710-2D/15-6/30/AL	15	2880	6	30	195.3	750	③
			VDO-710-2D/15-6/32,5/AL	15	2880	6	32.5	195.3	750	④
			VDO-710-2D/18,5-6/35/AL	18.5	2880	6	35	210.3	750	⑤
			VDO-710-2D/18,5-6/37,5/AL	18.5	2880	6	37.5	210.3	750	⑥
			VDO-710-2D/22-6/40/AL	22	2880	6	40	256.3	750	⑦

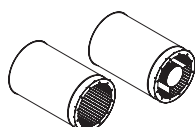
**Accessories:**



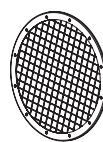
KOM-VO backdraft damper



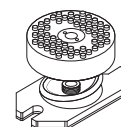
KOM1-VO backdraft damper



SR SRV silencer



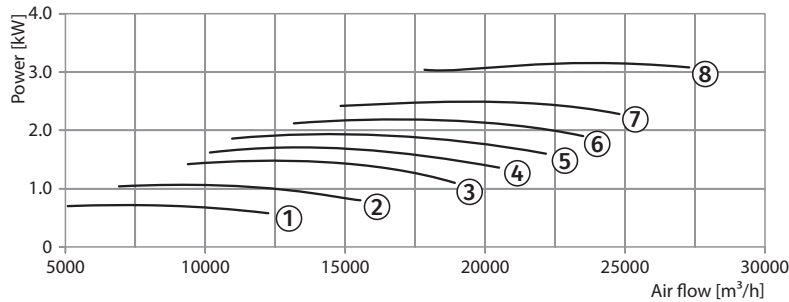
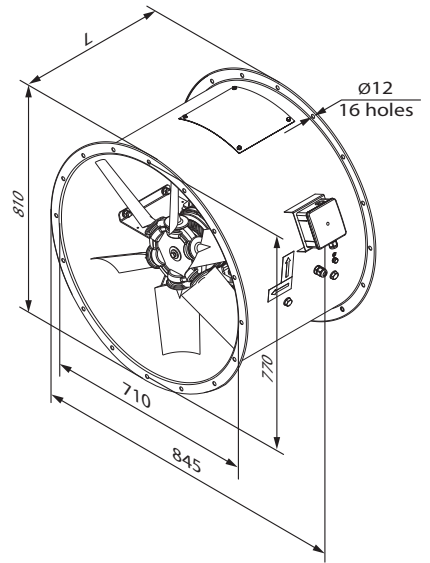
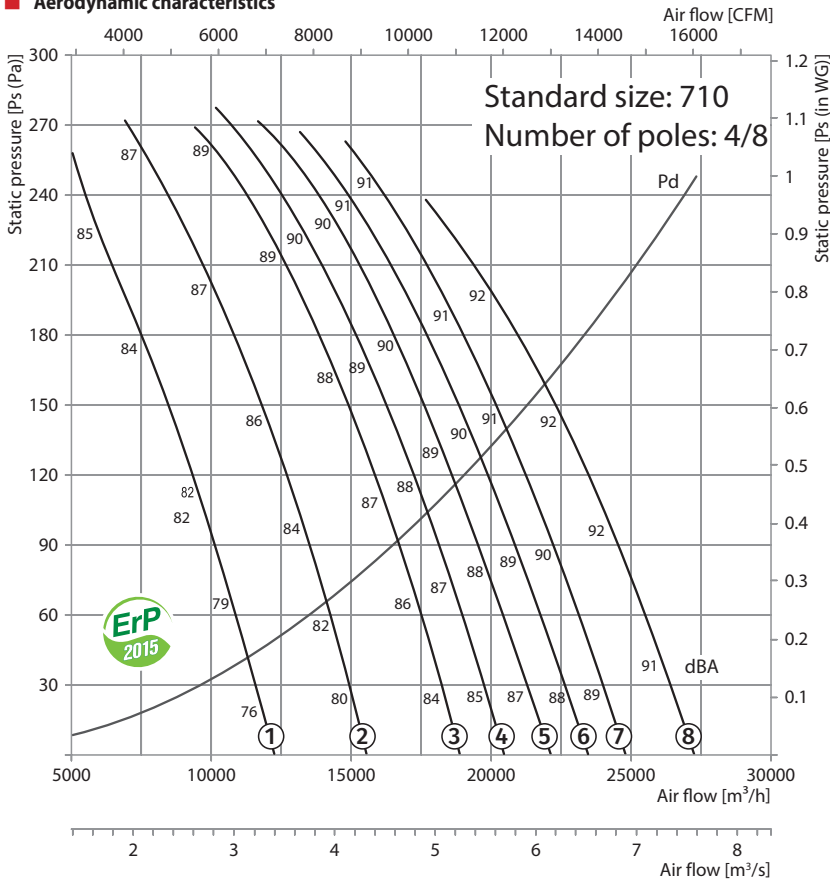
SZ-VO protective mesh



VVCp anti-vibration mount



**Aerodynamic characteristics**

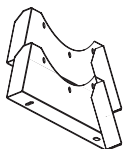


**Technical data:**

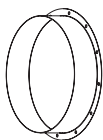
Size	Number of poles	Voltage [V / 50 Hz]	Model	Installed motor power Ny [kW]	RPM [min <sup>-1</sup> ]	Q-ty of blades	Blade setting angle [°]	Weight [kg]	Length L [mm]	Curve number on graph
710	4/8	3~ 400	VDO-710-4/8D/0,8/0,2-6/20/AL	0.8/0.2	1440/720	6	20	99.3	450	①*
			VDO-710-4/8D/1,2/0,3-6/25/AL	1.2/0.3	1440/720	6	25	104.3	450	②*
			VDO-710-4/8D/1,6/0,4-6/30/AL	1.6/0.4	1440/720	6	30	107.3	450	③*
			VDO-710-4/8D/2,2/0,55-6/32,5/AL	2.2/0.55	1440/720	6	32.5	114.3	450	④*
			VDO-710-4/8D/2,2/0,55-6/35/AL	2.2/0.55	1440/720	6	35	114.3	450	⑤*
			VDO-710-4/8D/2,2/0,55-6/37,5/AL	2.2/0.55	1440/720	6	37.5	114.3	450	⑥*
			VDO-710-4/8D/2,8/0,7-6/40/AL	2.8/0.7	1440/720	6	40	117.3	550	⑦*
			VDO-710-4/8D/3,8/1-6/45/AL	3.8/1	1440/720	6	45	127.3	550	⑧*

\* maximum speed graph

**Accessories:**



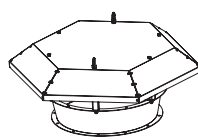
O-VO carrier



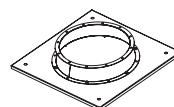
F-VO flange



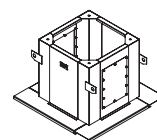
VVGf-VO flexible joint



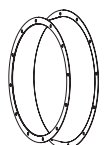
Z-VO hood



PK-VO roof adapter

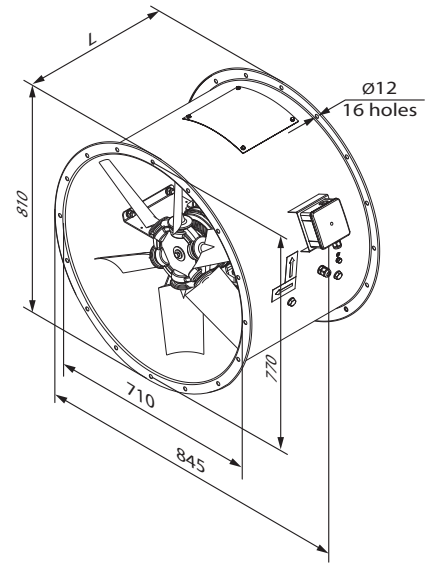
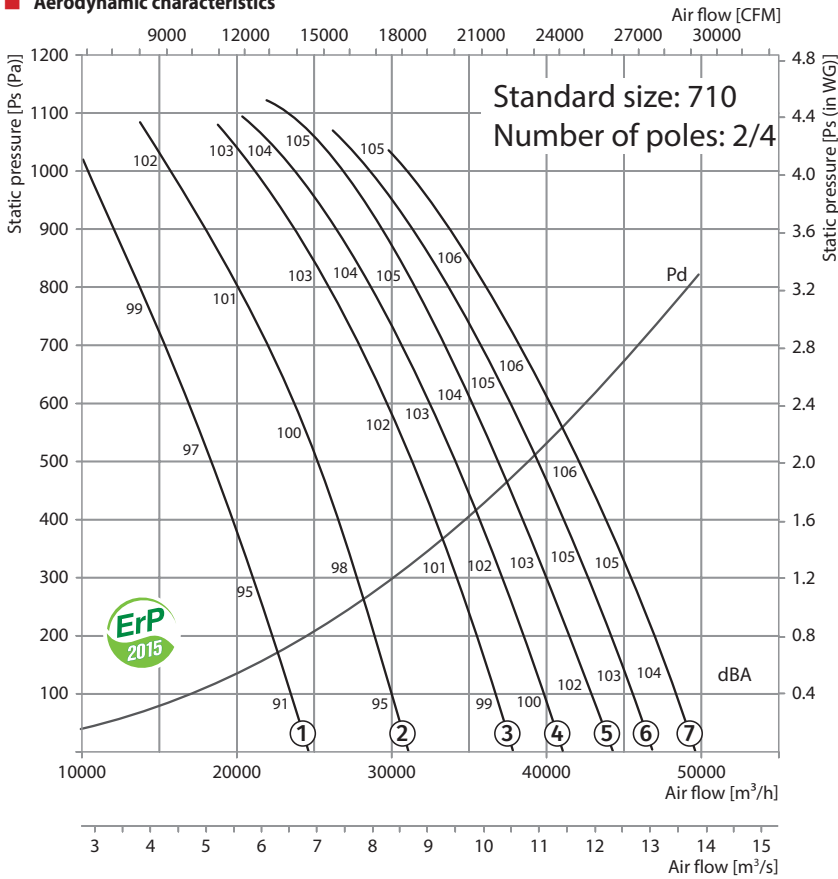


SM-VO mounting curb

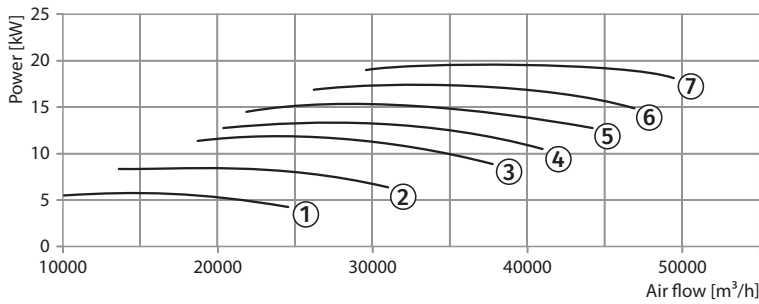


VK-VO inlet cone

**Aerodynamic characteristics**



VDO 710-2/4

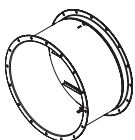


**Technical data:**

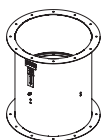
Size	Number of poles	Voltage [V / 50 Hz]	Model	Installed motor power Ny [kW]	RPM [min <sup>-1</sup> ]	Q-ty of blades	Blade setting angle [°]	Weight [kg]	Length L [mm]	Curve number on graph
710	2/4	3~400	VDO-710-2/4D/6/1,5-6/20/AL	6/1,5	2880/1440	6	20	142.3	550	①*
			VDO-710-2/4D/12/3-6/25/AL	12/3	2880/1440	6	25	202.3	650	②*
			VDO-710-2/4D/12/3-6/30/AL	12/3	2880/1440	6	30	202.3	750	③*
			VDO-710-2/4D/16/4-6/32,5/AL	16/4	2880/1440	6	32.5	219.3	750	④*
			VDO-710-2/4D/16/4-6/35/AL	16/4	2880/1440	6	35	219.3	750	⑤*
			VDO-710-2/4D/20/5,5-6/37,5/AL	20/5,5	2880/1440	6	37.5	244.3	750	⑥*
			VDO-710-2/4D/20/5,5-6/40/AL	20/5,5	2880/1440	6	40	244.3	750	⑦*

\* maximum speed graph

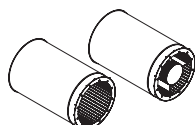
**Accessories:**



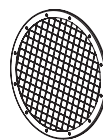
KOM-VO backdraft damper



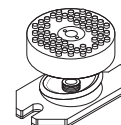
KOM1-VO backdraft damper



SR SRV silencer

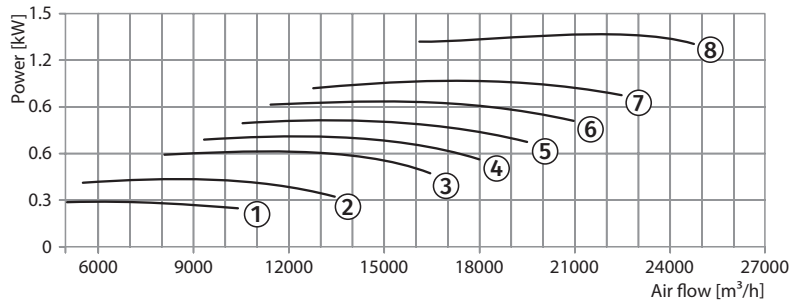
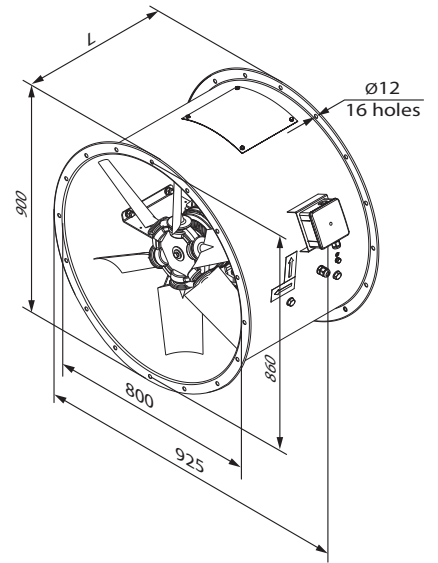
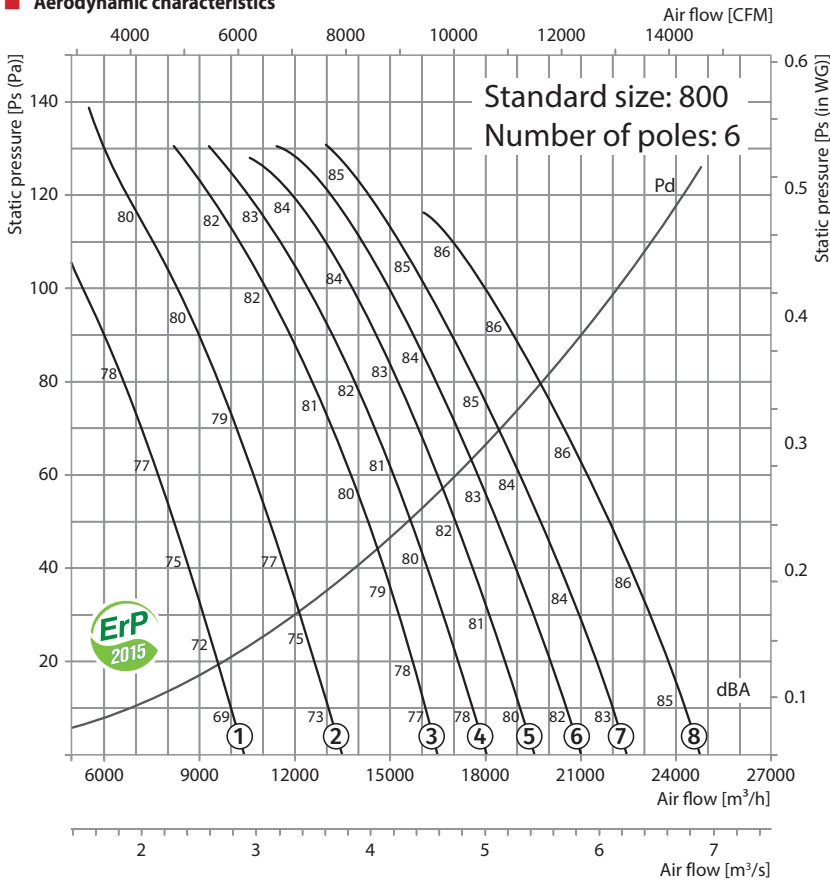


SZ-VO protective mesh



VVCp anti-vibration mount

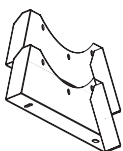
**Aerodynamic characteristics**



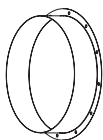
**Technical data:**

Size	Number of poles	Voltage [V / 50 Hz]	Model	Installed motor power Ny [kW]	RPM [min <sup>-1</sup> ]	Q-ty of blades	Blade setting angle [°]	Weight [kg]	Length L [mm]	Curve number on graph
800	6	3~ 400	VDO-800-6D/0,37-6/20/AL	0.37	960	6	20	109.6	450	①
			VDO-800-6D/0,55-6/25/AL	0.55	960	6	25	110.6	450	②
			VDO-800-6D/0,75-6/30/AL	0.75	960	6	30	115.6	450	③
			VDO-800-6D/0,75-6/32,5/AL	0.75	960	6	32.5	115.6	450	④
			VDO-800-6D/1,1-6/35/AL	1.1	960	6	35	119.6	450	⑤
			VDO-800-6D/1,1-6/37,5/AL	1.1	960	6	37.5	119.6	450	⑥
			VDO-800-6D/1,1-6/40/AL	1.1	960	6	40	119.6	450	⑦
			VDO-800-6D/1,5-6/45/AL	1.5	960	6	45	122.6	550	⑧

**Accessories:**



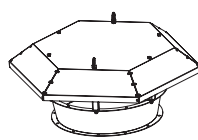
O-VO carrier



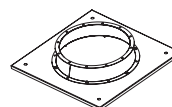
F-VO flange



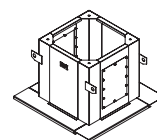
VVGf-VO flexible joint



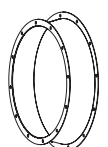
Z-VO hood



PK-VO roof adapter

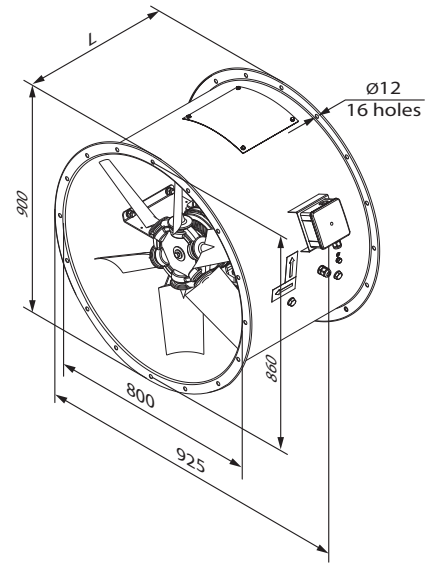
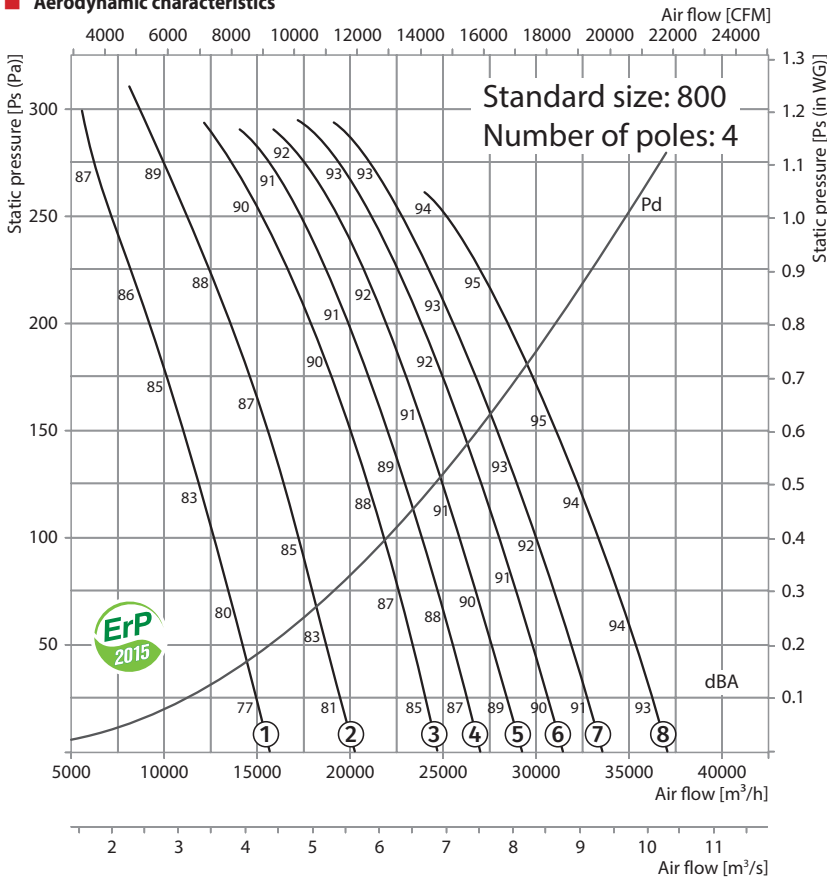


SM-VO mounting curb

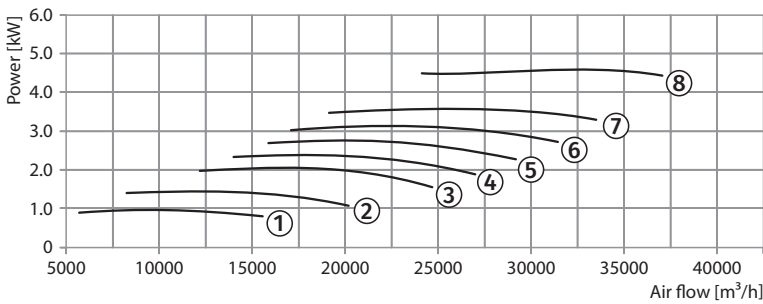


VK-VO inlet cone

**Aerodynamic characteristics**



VDO 800-4

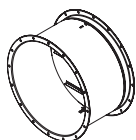


**Technical data:**

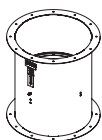
Size	Number of poles	Voltage [V / 50 Hz]	Model	Installed motor power Ny [kW]	RPM [min <sup>-1</sup> ]	Q-ty of blades	Blade setting angle [°]	Weight [kg]	Length L [mm]	Curve number on graph
800	4	3~ 400	VDO-800-4D/1,1-6/20/AL	1.1	1440	6	20	116.6	450	①
			VDO-800-4D/1,5-6/25/AL	1.5	1440	6	25	119.6	450	②
			VDO-800-4D/2,2-6/30/AL	2.2	1440	6	30	125.6	450	③
			VDO-800-4D/3-6/32,5/AL	3	1440	6	32.5	128.6	550	④
			VDO-800-4D/3-6/35/AL	3	1440	6	35	128.6	550	⑤
			VDO-800-4D/4-6/37,5/AL	4	1440	6	37.5	142.6	550	⑥
			VDO-800-4D/4-6/40/AL	4	1440	6	40	142.6	550	⑦
			VDO-800-4D/5,5-6/45/AL	5.5	1440	6	45	156.6	550	⑧
800	4/8	3~ 400	VDO-800-4/8D/1,2/0,3-6/20/AL	1.2/0.3	1440/720	6	20	115.6	450	①*
			VDO-800-4/8D/1,6/0,4-6/25/AL	1.6/0.4	1440/720	6	25	118.6	450	②*
			VDO-800-4/8D/2,2/0,55-6/30/AL	2.2/0.55	1440/720	6	30	125.6	450	③*
			VDO-800-4/8D/2,8/0,7-6/32,5/AL	2.8/0.7	1440/720	6	32.5	128.6	550	④*
			VDO-800-4/8D/2,8/0,7-6/35/AL	2.8/0.7	1440/720	6	35	128.6	550	⑤*
			VDO-800-4/8D/3,8/1-6/37,5/AL	3.8/1	1440/720	6	37.5	138.6	550	⑥*
			VDO-800-4/8D/3,8/1-6/40/AL	3.8/1	1440/720	6	40	138.6	550	⑦*
			VDO-800-4/8D/5,1,3-6/45/AL	5/1.3	1440/720	6	45	163.6	550	⑧*

\* maximum speed graph

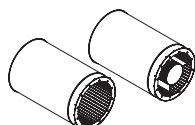
**Accessories:**



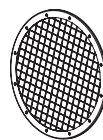
KOM-VO backdraft damper



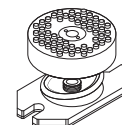
KOM1-VO backdraft damper



SR SRV silencer

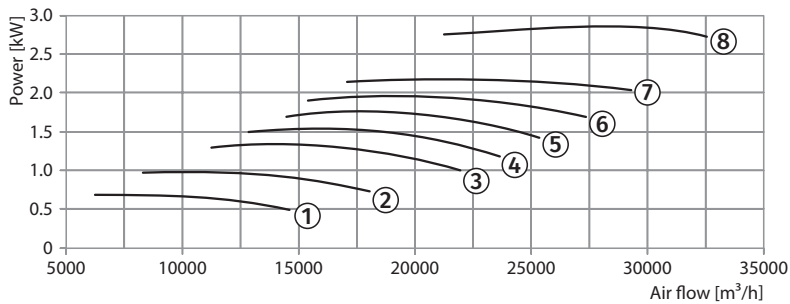
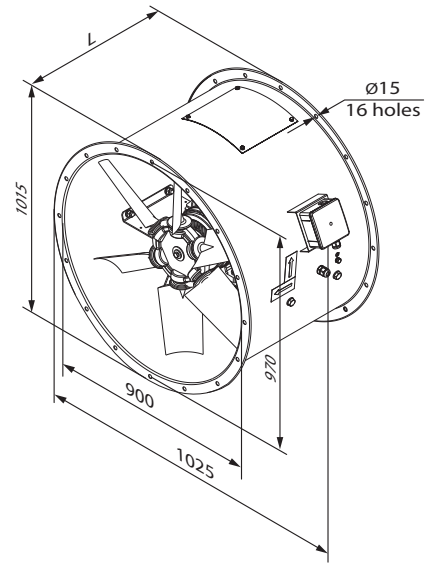
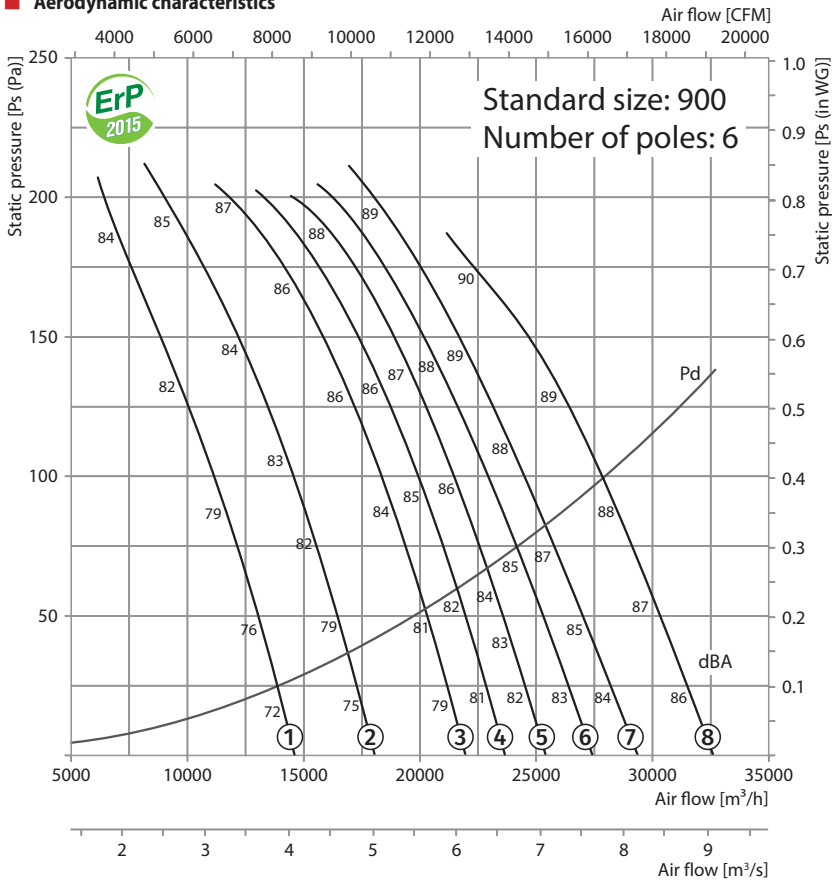


SZ-VO protective mesh



VVCp anti-vibration mount

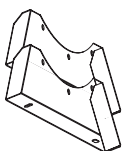
**Aerodynamic characteristics**



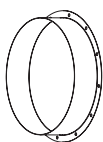
**Technical data:**

Size	Number of poles	Voltage [V / 50 Hz]	Model	Installed motor power Ny [kW]	RPM [min <sup>-1</sup> ]	Q-ty of blades	Blade setting angle [°]	Weight [kg]	Length L [mm]	Curve number on graph
900	6	3~ 400	VDO-900-6D/0,75-8/20/AL	0.75	960	8	20	120.8	450	①
			VDO-900-6D/1,1-8/25/AL	1.1	960	8	25	124.8	450	②
			VDO-900-6D/1,5-8/30/AL	1.5	960	8	30	127.8	550	③
			VDO-900-6D/1,5-8/32,5/AL	1.5	960	8	32.5	127.8	550	④
			VDO-900-6D/2,2-8/35/AL	2.2	960	8	35	138.8	550	⑤
			VDO-900-6D/2,2-8/37,5/AL	2.2	960	8	37.5	138.8	550	⑥
			VDO-900-6D/2,2-8/40/AL	2.2	960	8	40	138.8	550	⑦
			VDO-900-6D/3-8/45/AL	3	960	8	45	152.8	650	⑧

**Accessories:**



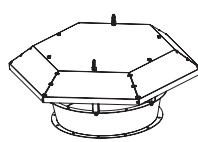
O-VO carrier



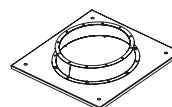
F-VO flange



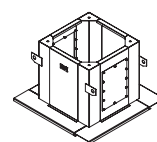
VVGf-VO flexible joint



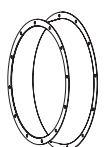
Z-VO hood



PK-VO roof adapter

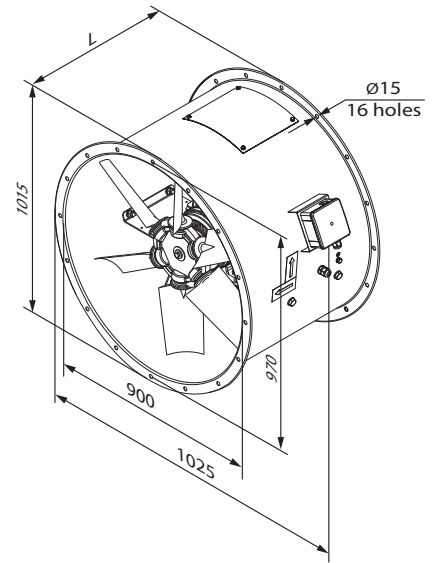
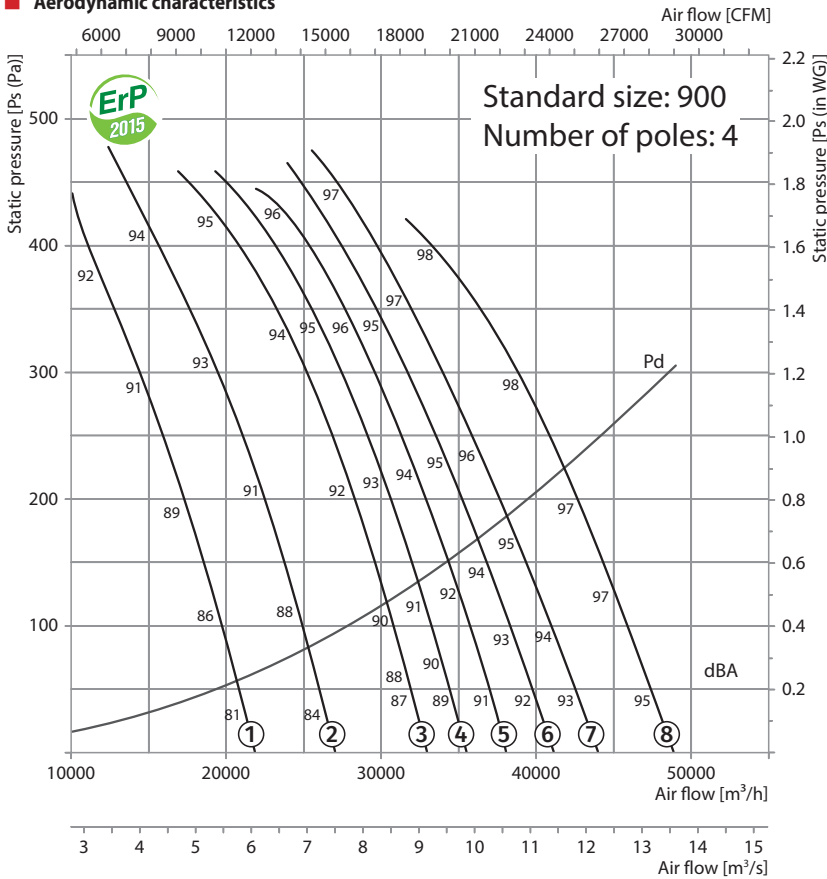


SM-VO mounting curb

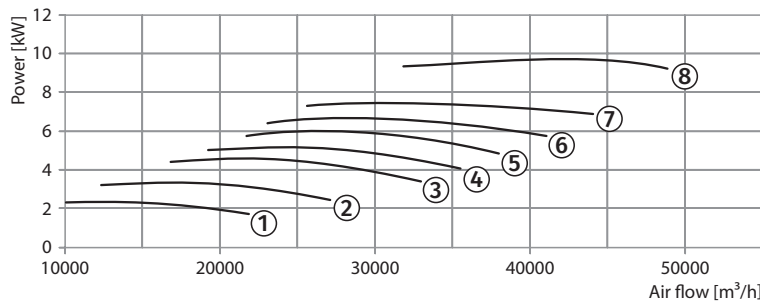


VK-VO inlet cone

**Aerodynamic characteristics**



VDO 900-4

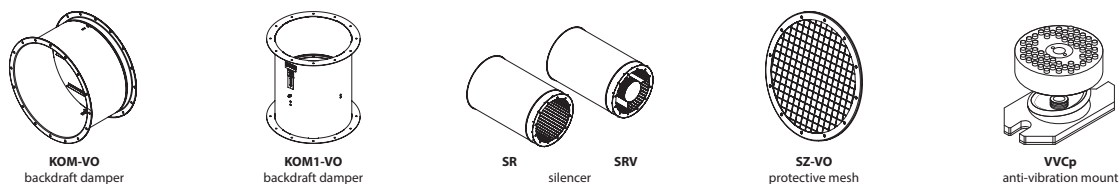


**Technical data:**

Size	Number of poles	Voltage [V / 50 Hz]	Model	Installed motor power Ny [kW]	RPM [min <sup>-1</sup> ]	Q-ty of blades	Blade setting angle [°]	Weight [kg]	Length L [mm]	Curve number on graph
900	4	3~ 400	VDO-900-4D/3-8/20/AL	3	1440	8	20	133.8	550	①
			VDO-900-4D/4-8/25/AL	4	1440	8	25	147.8	550	②
			VDO-900-4D/5,5-8/30/AL	5.5	1440	8	30	161.8	550	③
			VDO-900-4D/5,5-8/32,5/AL	5.5	1440	8	32.5	161.8	550	④
			VDO-900-4D/7,5-8/35/AL	7.5	1440	8	35	169.8	650	⑤
			VDO-900-4D/7,5-8/37,5/AL	7.5	1440	8	37.5	169.8	650	⑥
			VDO-900-4D/7,5-8/40/AL	7.5	1440	8	40	169.8	650	⑦
			VDO-900-4D/11-8/45/AL	11.0	1440	8	45	206.8	750	⑧
900	4/8	3~ 400	VDO-900-4/8D/2,8/0,7-8/20/AL	2.8/0.7	1440/720	8	20	133.8	550	①*
			VDO-900-4/8D/3,8/1-8/25/AL	3.8/1	1440/720	8	25	143.8	550	②*
			VDO-900-4/8D/5/1,3-8/30/AL	5/1.3	1440/720	8	30	168.8	550	③*
			VDO-900-4/8D/7,2/1,8-8/32,5/AL	7.2/1.8	1440/720	8	32.5	180.8	550	④*
			VDO-900-4/8D/7,2/1,8-8/35/AL	7.2/1.8	1440/720	8	35	180.8	650	⑤*
			VDO-900-4/8D/7,2/1,8-8/37,5/AL	7.2/1.8	1440/720	8	37.5	180.8	650	⑥*
			VDO-900-4/8D/11/3-8/40/AL	11/3	1440/720	8	40	219.8	650	⑦*
			VDO-900-4/8D/11/3-8/45/AL	11/3	1440/720	8	45	219.8	750	⑧*

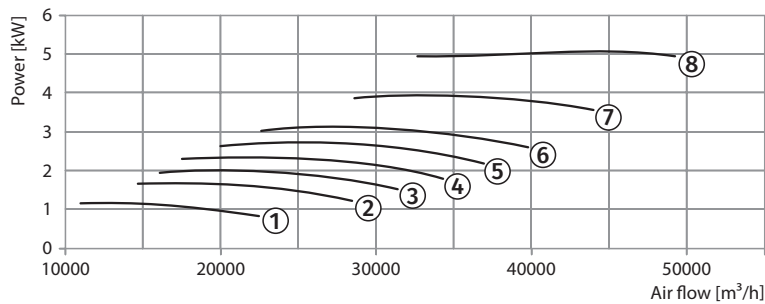
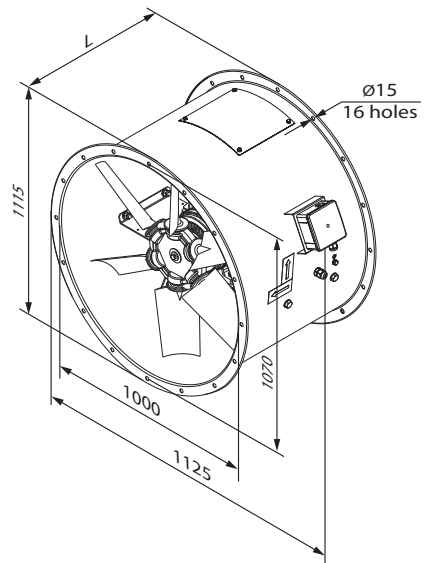
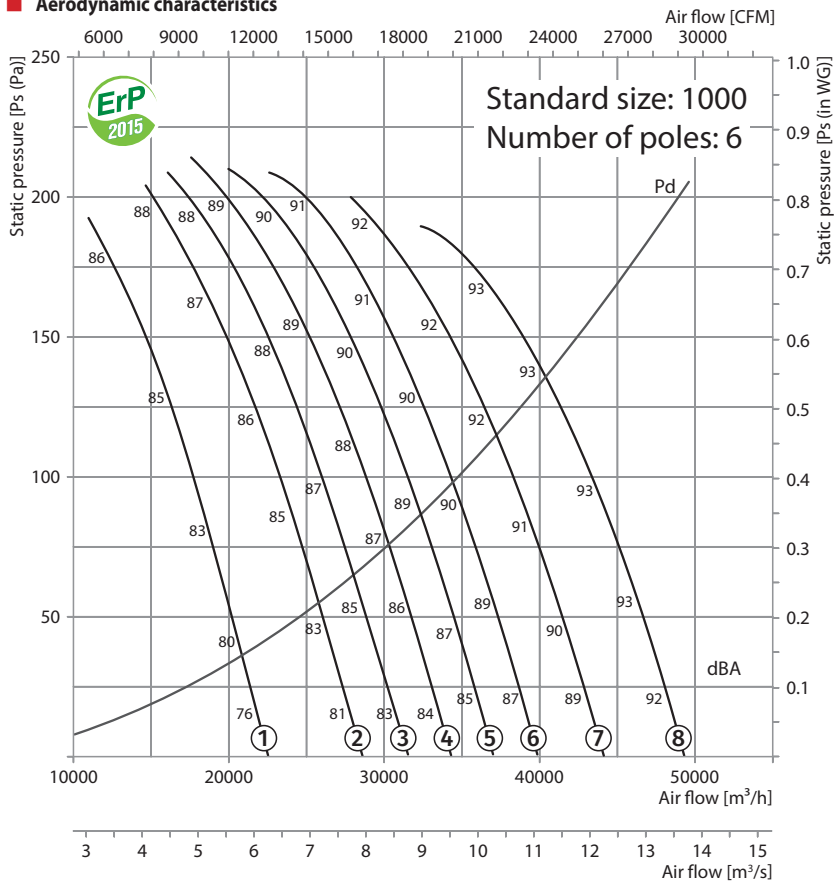
\* maximum speed graph

**Accessories:**





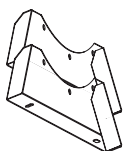
**Aerodynamic characteristics**



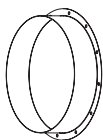
**Technical data:**

Size	Number of poles	Voltage [V / 50 Hz]	Model	Installed motor power Ny [kW]	RPM [min <sup>-1</sup> ]	Q-ty of blades	Blade setting angle [°]	Weight [kg]	Length L [mm]	Curve number on graph
1000	6	3~ 400	VDO-1000-6D/1,5-8/25/AL	1.5	960	8	25	165.5	550	①
			VDO-1000-6D/2,2-8/30/AL	2.2	960	8	30	176.5	550	②
			VDO-1000-6D/2,2-8/32,5/AL	2.2	960	8	32.5	176.5	550	③
			VDO-1000-6D/3-8/35/AL	3	960	8	35	190.5	650	④
			VDO-1000-6D/3-8/37,5/AL	3	960	8	37.5	190.5	650	⑤
			VDO-1000-6D/4-8/40/AL	4	960	8	40	204.5	650	⑥
			VDO-1000-6D/5,5-8/45/AL	5.5	960	8	45	211.5	650	⑦
			VDO-1000-6D/5,5-8/50/AL	5.5	960	8	50	211.5	650	⑧

**Accessories:**



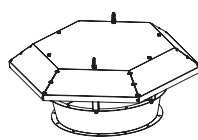
O-VO carrier



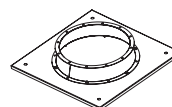
F-VO flange



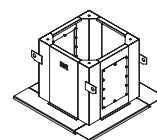
VVGf-VO flexible joint



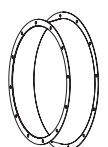
Z-VO hood



PK-VO roof adapter

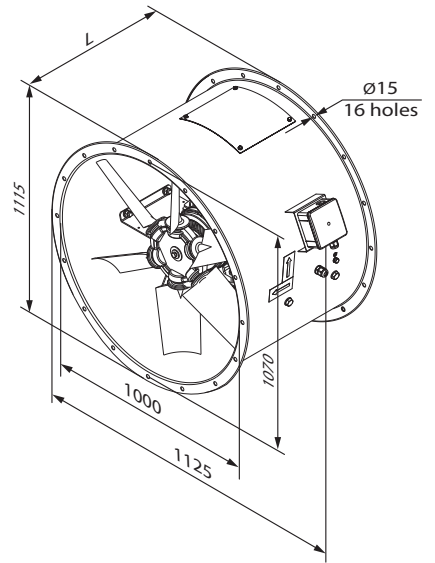
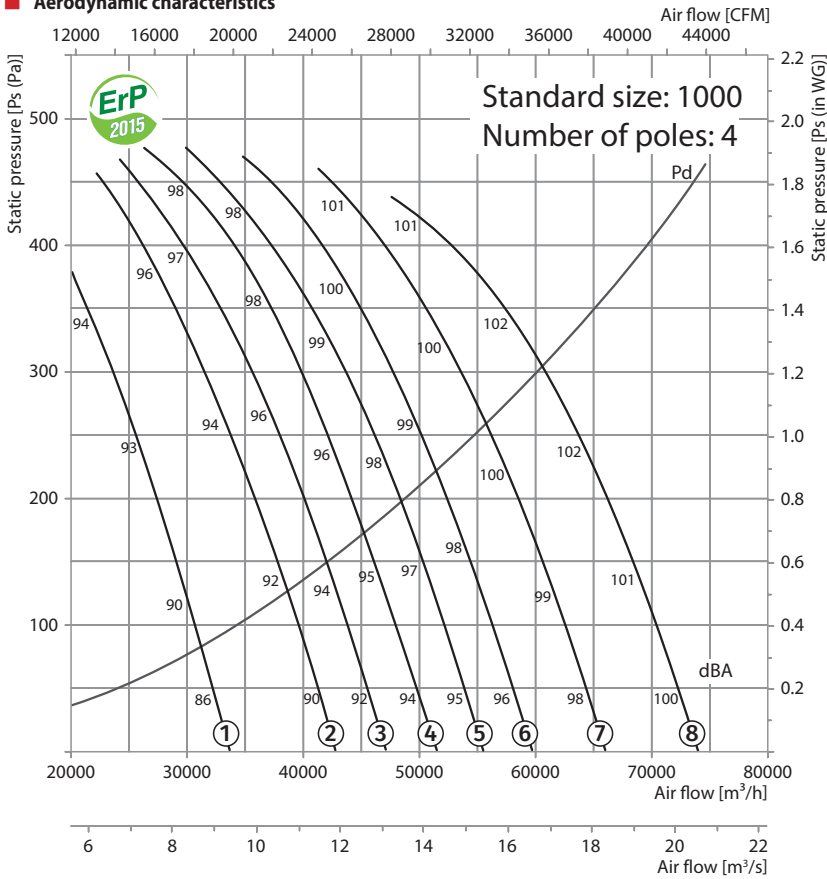


SM-VO mounting curb

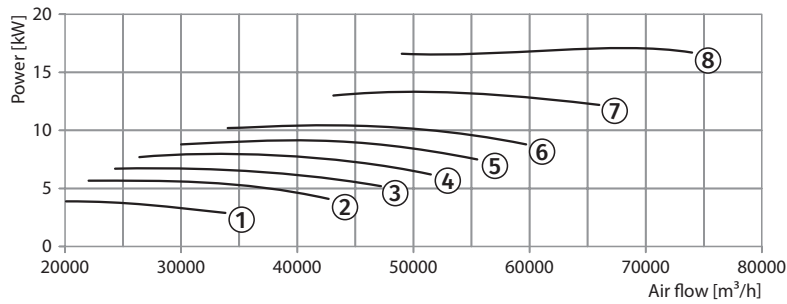


VK-VO inlet cone

**Aerodynamic characteristics**



VDO 1000-4

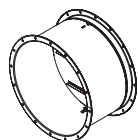


**Technical data:**

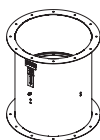
Size	Number of poles	Voltage [V / 50 Hz]	Model	Installed motor power Ny [kW]	RPM [min <sup>-1</sup> ]	Q-ty of blades	Blade setting angle [°]	Weight [kg]	Length L [mm]	Curve number on graph
1000	4	3~ 400	VDO-1000-4D/5,5-8/25/AL	5.5	1440	8	25	199.5	550	①
			VDO-1000-4D/7,5-8/30/AL	7.5	1440	8	30	207.5	650	②
			VDO-1000-4D/7,5-8/32,5/AL	7.5	1440	8	32.5	207.5	650	③
			VDO-1000-4D/9,2-8/35/AL	9.2	1440	8	35	226.5	650	④
			VDO-1000-4D/11-8/37,5/AL	11	1440	8	37.5	244.5	750	⑤
			VDO-1000-4D/11-8/40/AL	11	1440	8	40	244.5	750	⑥
			VDO-1000-4D/15-8/45/AL	15	1440	8	45	259.5	750	⑦
			VDO-1000-4D/18,5-8/50/AL	18.5	1440	8	50	312.5	850	⑧
1000	4/8	3~ 400	VDO-1000-4/8D/5/1,3-8/25/AL	5/1.3	1440/720	8	25	206.5	550	①*
			VDO-1000-4/8D/7,2/1,8-8/30/AL	7.2/1.8	1440/720	8	30	218.5	650	②*
			VDO-1000-4/8D/7,2/1,8-8/32,5/AL	7.2/1.8	1440/720	8	32.5	218.5	650	③*
			VDO-1000-4/8D/11/3-8/35/AL	11/3	1440/720	8	35	257.5	650	④*
			VDO-1000-4/8D/11/3-8/37,5/AL	11/3	1440/720	8	37.5	257.5	750	⑤*
			VDO-1000-4/8D/11/3-8/40/AL	11/3	1440/720	8	40	257.5	750	⑥*
			VDO-1000-4/8D/14/3,5-8/45/AL	14/3.5	1440/720	8	45	273.5	750	⑦*
			VDO-1000-4/8D/17/4,3-8/50/AL	17/4.3	1440/720	8	50	273.5	850	⑧*

\* maximum speed graph

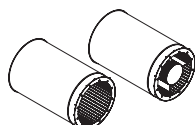
**Accessories:**



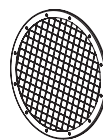
KOM-VO backdraft damper



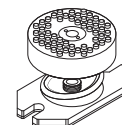
KOM1-VO backdraft damper



SR SRV silencer

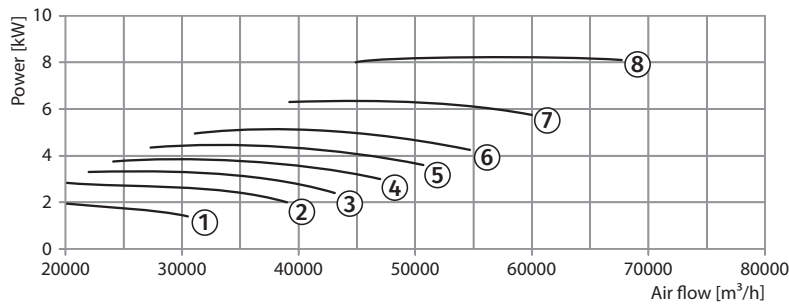
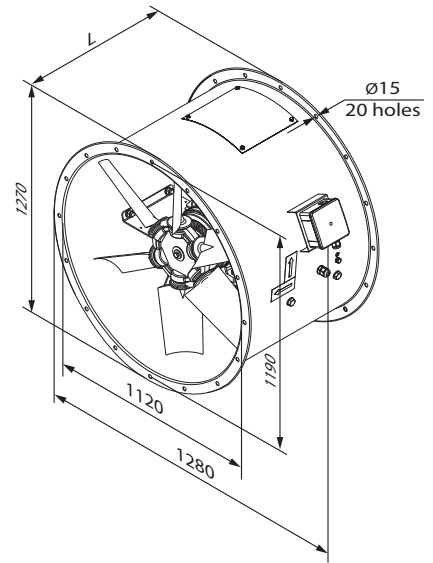
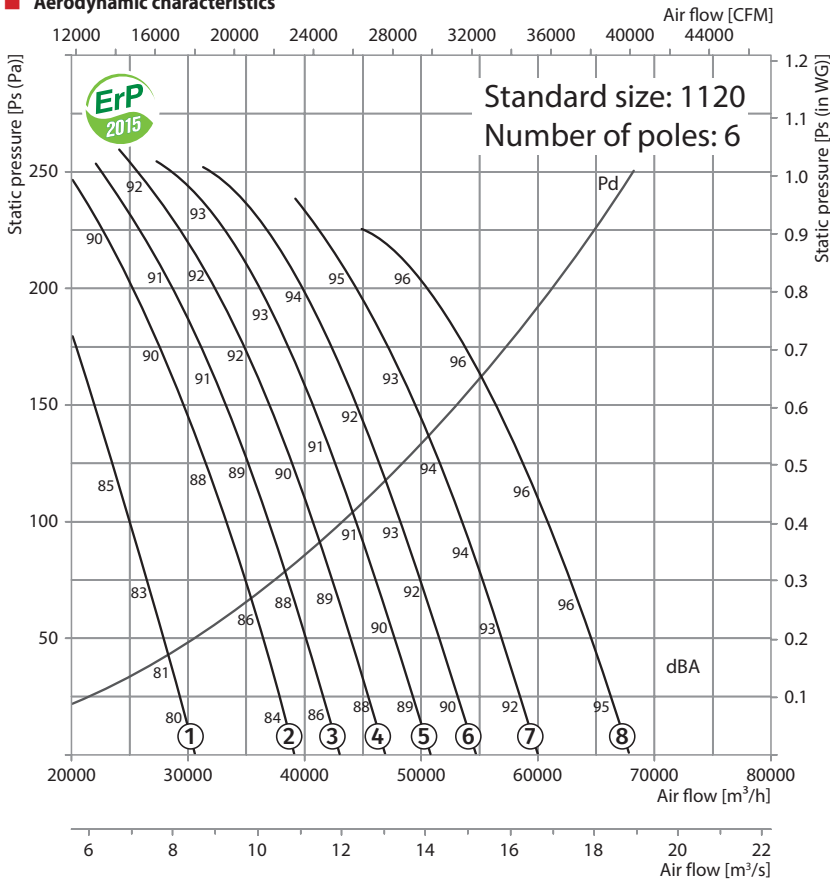


SZ-VO protective mesh



VVCp anti-vibration mount

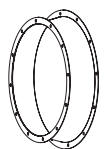
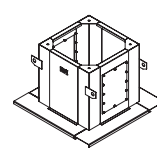
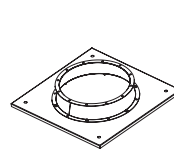
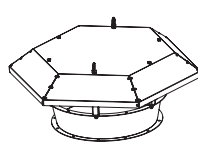
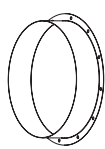
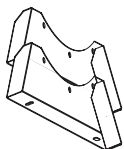
**Aerodynamic characteristics**



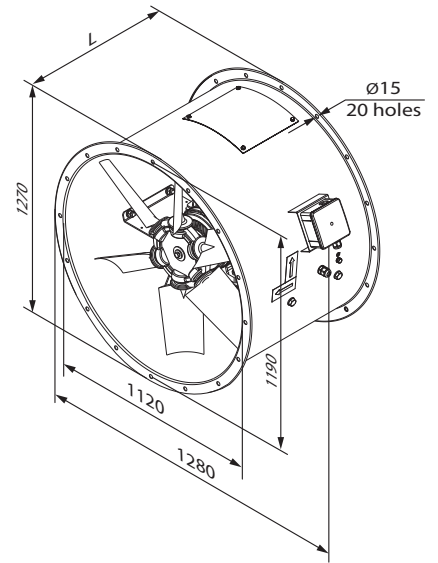
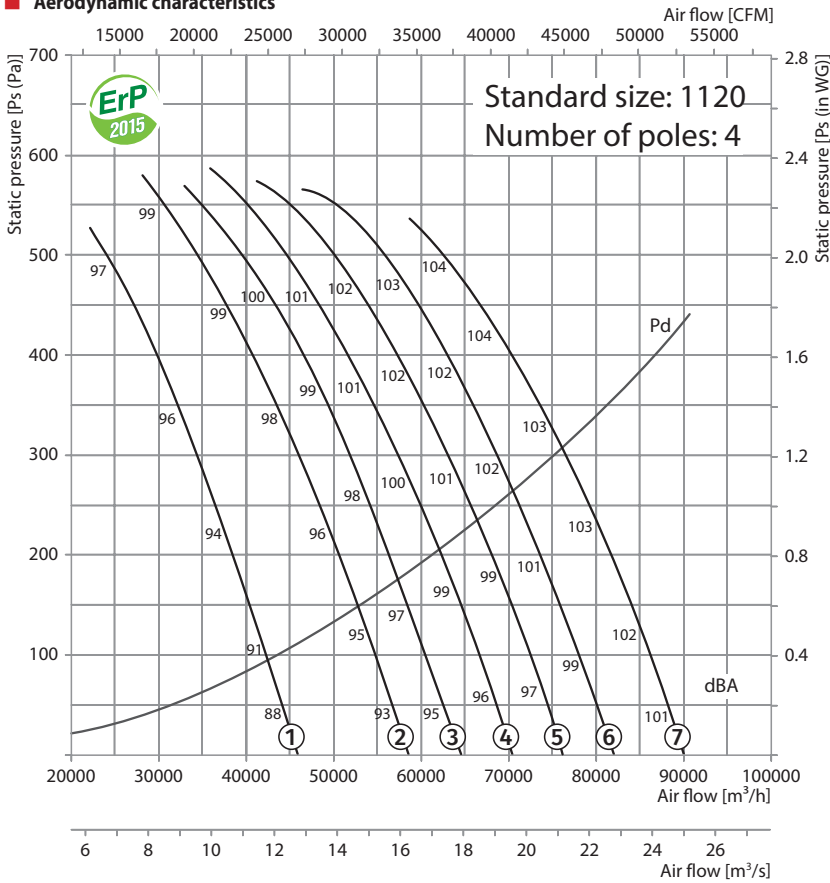
**Technical data:**

Size	Number of poles	Voltage [V / 50 Hz]	Model	Installed motor power Ny [kW]	RPM [min <sup>-1</sup> ]	Q-ty of blades	Blade setting angle [°]	Weight [kg]	Length L [mm]	Curve number on graph
1120	6	3~ 400	VDO-1120-6D/2,2-8/25/AL	2.2	960	8	25	195.5	550	①
			VDO-1120-6D/3-8/30/AL	3	960	8	30	209.5	650	②
			VDO-1120-6D/4-8/32,5/AL	4	960	8	32.5	223.5	650	③
			VDO-1120-6D/4-8/35/AL	4	960	8	35	223.5	650	④
			VDO-1120-6D/5,5-8/37,5/AL	5.5	960	8	37.5	230.5	650	⑤
			VDO-1120-6D/5,5-8/40/AL	5.5	960	8	40	230.5	650	⑥
			VDO-1120-6D/7,5-8/45/AL	7.5	960	8	45	262.5	750	⑦
			VDO-1120-6D/9,2-8/50/AL	9.2	960	8	50	274.5	750	⑧

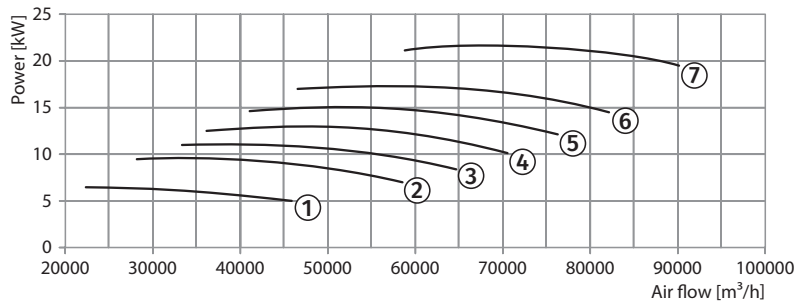
**Accessories:**



**Aerodynamic characteristics**



VDO 1120-4

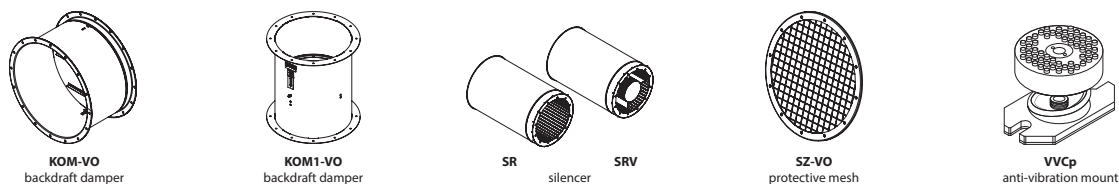


**Technical data:**

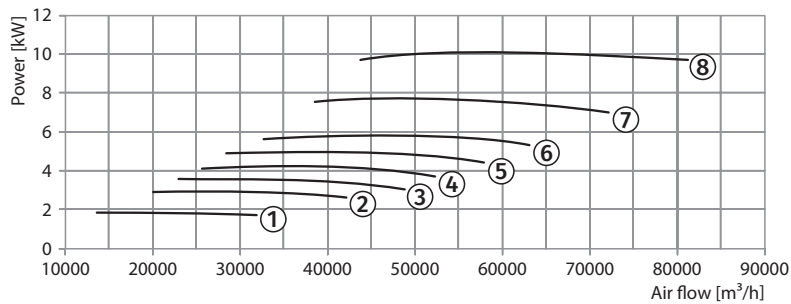
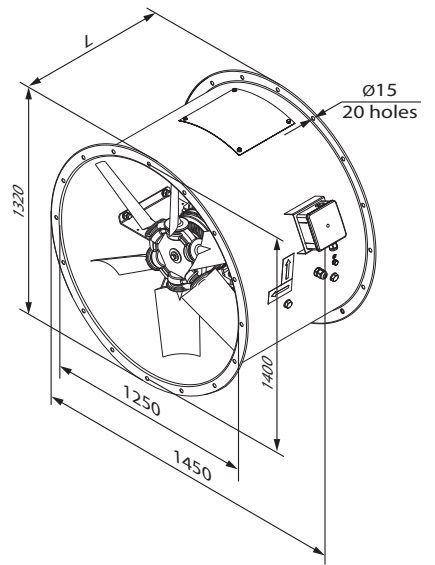
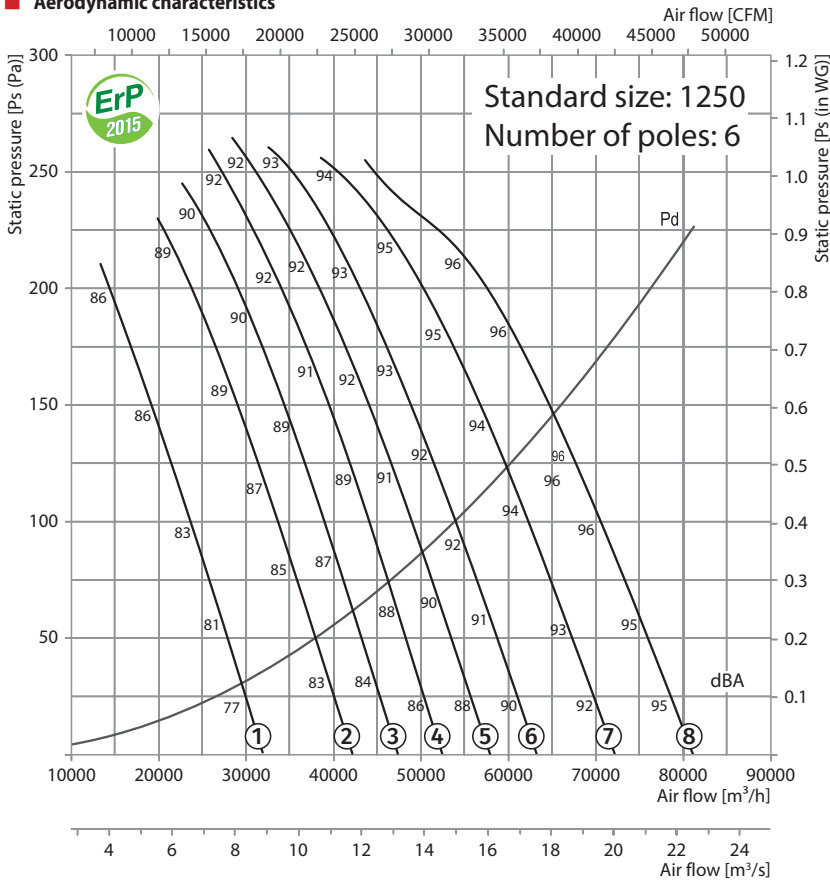
Size	Number of poles	Voltage [V / 50 Hz]	Model	Installed motor power Ny [kW]	RPM [min <sup>-1</sup> ]	Q-ty of blades	Blade setting angle [°]	Weight [kg]	Length L [mm]	Curve number on graph
1120	4	3~ 400	VDO-1120-4D/7,5-8/25/AL	7.5	1440	8	25	226.5	650	①
			VDO-1120-4D/11-8/30/AL	11	1440	8	30	263.5	750	②
			VDO-1120-4D/11-8/32,5/AL	11	1440	8	32.5	263.5	750	③
			VDO-1120-4D/15-8/35/AL	15	1440	8	35	278.5	750	④
			VDO-1120-4D/18,5-8/37,5/AL	18.5	1440	8	37.5	331.5	850	⑤
			VDO-1120-4D/18,5-8/40/AL	18.5	1440	8	40	331.5	850	⑥
			VDO-1120-4D/22-8/45/AL	22	1440	8	45	342.5	850	⑦
1120	4/8	3~ 400	VDO-1120-4/8D/7,2/1,8-8/25/AL	7.2/1.8	1440/720	8	25	237.5	650	①*
			VDO-1120-4/8D/11/3-8/30/AL	11/3	1440/720	8	30	276.5	750	②*
			VDO-1120-4/8D/11/3-8/32,5/AL	11/3	1440/720	8	32.5	276.5	750	③*
			VDO-1120-4/8D/14/3,5-8/35/AL	14/3.5	1440/720	8	35	292.5	750	④*
			VDO-1120-4/8D/17/4,3-8/37,5/AL	17/4.3	1440/720	8	37.5	319.5	850	⑤*
			VDO-1120-4/8D/20/5-8/40/AL	20/5	1440/720	8	40	334.5	850	⑥*
			VDO-1120-4/8D/28/6,5-8/45/AL	28/6.5	1440/720	8	45	392.5	850	⑦*

\* maximum speed graph

**Accessories:**



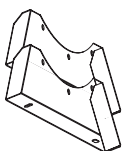
**Aerodynamic characteristics**



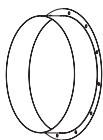
**Technical data:**

Size	Number of poles	Voltage [V / 50 Hz]	Model	Installed motor power Ny [kW]	RPM [min <sup>-1</sup> ]	Q-ty of blades	Blade setting angle [°]	Weight [kg]	Length L [mm]	Curve number on graph
1250	6	3~ 400	VDO-1250-6D/2,2-8/25/AL	2.2	960	8	25	214.5	550	①
			VDO-1250-6D/3-8/30/AL	3	960	8	30	228.5	650	②
			VDO-1250-6D/4-8/32,5/AL	4	960	8	32.5	242.5	650	③
			VDO-1250-6D/5,5-8/35/AL	5.5	960	8	35	249.5	650	④
			VDO-1250-6D/5,5-8/37,5/AL	5.5	960	8	37.5	249.5	650	⑤
			VDO-1250-6D/7,5-8/40/AL	7.5	960	8	40	281.5	750	⑥
			VDO-1250-6D/9,2-8/45/AL	9.2	960	8	45	293.5	750	⑦
			VDO-1250-6D/11-8/50/AL	11	960	8	50	306.5	750	⑧

**Accessories:**



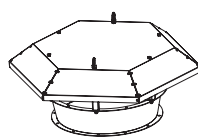
O-VO carrier



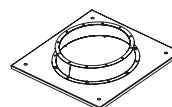
F-VO flange



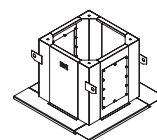
VVGf-VO flexible joint



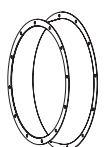
Z-VO hood



PK-VO roof adapter

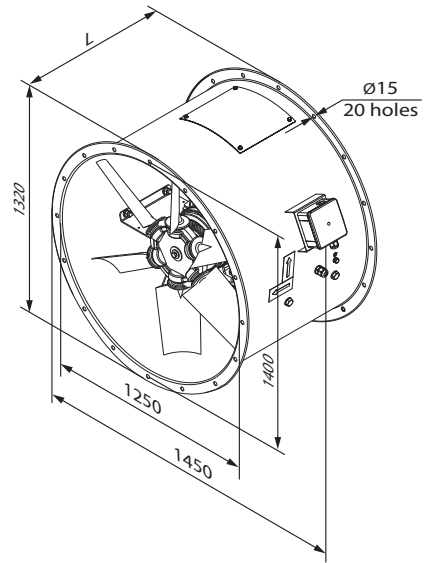
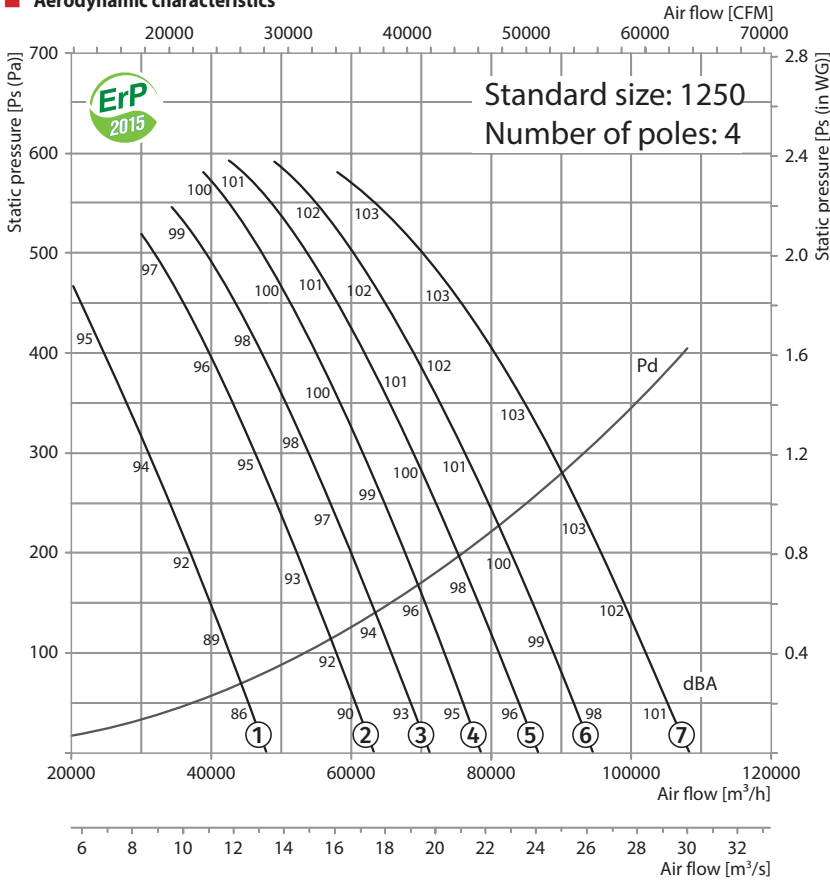


SM-VO mounting curb

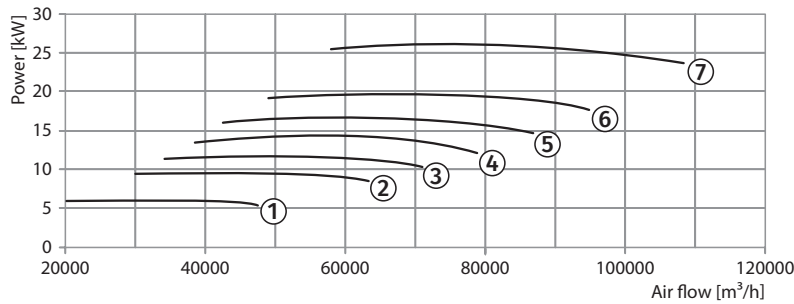


VK-VO inlet cone

**Aerodynamic characteristics**



VDO 1250-4

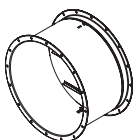


**Technical data:**

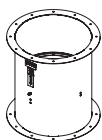
Size	Number of poles	Voltage [V / 50 Hz]	Model	Installed motor power Ny [kW]	RPM [min <sup>-1</sup> ]	Q-ty of blades	Blade setting angle [°]	Weight [kg]	Length L [mm]	Curve number on graph
1250	4	3~ 400	VDO-1250-4D/7,5-8/25/AL	7.5	1440	8	25	245.5	650	①
			VDO-1250-4D/11-8/30/AL	11	1440	8	30	282.5	750	②
			VDO-1250-4D/15-8/32,5/AL	15	1440	8	32.5	297.5	750	③
			VDO-1250-4D/15-8/35/AL	15	1440	8	35	297.5	750	④
			VDO-1250-4D/18,5-8/37,5/AL	18.5	1440	8	37.5	350.5	850	⑤
			VDO-1250-4D/22-8/40/AL	22	1440	8	40	361.5	850	⑥
			VDO-1250-4D/30-8/45/AL	30	1440	8	45	424.5	850	⑦
1250	4/8	3~ 400	VDO-1250-4/8D/7,2/1,8-8/25/AL	7.2/1.8	1440/720	8	25	256.5	650	①*
			VDO-1250-4/8D/11/3-8/30/AL	11/3	1440/720	8	30	295.5	750	②*
			VDO-1250-4/8D/14/3,5-8/32,5/AL	14/3.5	1440/720	8	32.5	311.5	750	③*
			VDO-1250-4/8D/14/3,5-8/35/AL	14/3.5	1440/720	8	35	311.5	750	④*
			VDO-1250-4/8D/17/4,3-8/37,5/AL	17/4.3	1440/720	8	37.5	338.5	850	⑤*
			VDO-1250-4/8D/20/5-8/40/AL	20/5	1440/720	8	40	353.5	850	⑥*
			VDO-1250-4/8D/28/6,5-8/45/AL	28/6.5	1440/720	8	45	411.5	850	⑦*

\* maximum speed graph

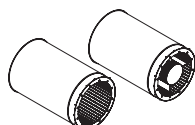
**Accessories:**



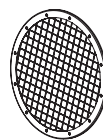
KOM-VO backdraft damper



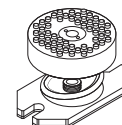
KOM1-VO backdraft damper



SR SRV silencer



SZ-VO protective mesh



VVCp anti-vibration mount